



# Hope project

What do you think?

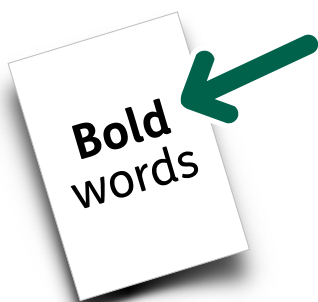


easy  
read



# Contents

	Page
Introduction	3
Thank you	12
Further help	13



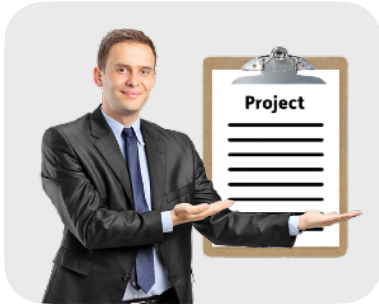
In this easy read document, difficult words are in **bold**. We explain what these words mean in the sentence after they have been used.



Some words are blue and underlined.

These are links which will go to another website which has more information.

# Introduction



Public Health at Surrey County Council are starting a new project all about hope.



We will be running free activities that will allow you to:

- Show what hope means to you.



- Meet new people.



- Try something new.



We would like to know what kind of activities you are interested in. This will help us plan our activities.

Please tell us what you think by answering these questions.



**Question 1:** Please tell us what the word 'hope' means to you.

**Question 2:** How would you like to explore the idea of hope?

☐

Through talking about it with others

☐

By writing about it, like in a poem

☐

Through music

☐

Through dance and moving my body

☐

By painting or drawing

☐

Through activities that are to do with nature and the outside, like making something

☐

None of these

If you have another idea of how you would like to explore the idea of hope, please tell us.



**Question 3:** Would you like to make something as part of your activity? This could be something like a piece of music with a group, or a painting you have done on your own.

☐

I would to make something bigger with a group of people

☐

I would like to make my own piece of work

☐

I don't mind



**Question 4:** Would you prefer to work in a group or on your own?

☐

In a group

☐

On my own



**Question 5:** If you were going to take part in this project would you need any extra support to be able to join in?

☐

Yes

☐

No



**Question 6a:** What day and time would be best for you to take part in the project?

☐

Monday morning

☐

Monday afternoon

☐

Monday evening

☐

Tuesday morning

☐

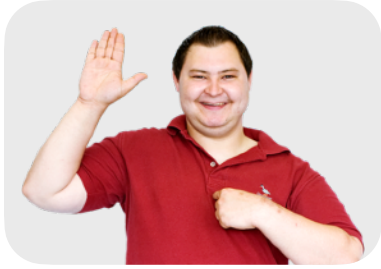
Tuesday afternoon

☐

Tuesday evening



- ☐ Wednesday morning
- ☐ Wednesday afternoon
- ☐ Wednesday evening
- ☐ Thursday morning
- ☐ Thursday afternoon
- ☐ Thursday evening
- ☐ Friday morning
- ☐ Friday afternoon
- ☐ Friday evening
- ☐ Saturday morning
- ☐ Saturday afternoon
- ☐ Saturday evening
- ☐ Sunday morning
- ☐ Sunday afternoon
- ☐ Sunday evening



**Question 6b:** I would prefer activities and project sessions to be...

☐

Face to face

☐

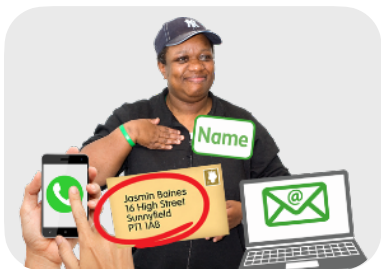
Online

☐

Either



Please tell us below whether you agree to give your name and how we can contact you.



**Question 7:** I agree to give my name and contact information so you can get in touch with me about:

☐

The project activities and when they will be

☐

Any support needs I have that need to be met

☐

Other events and activities

☐

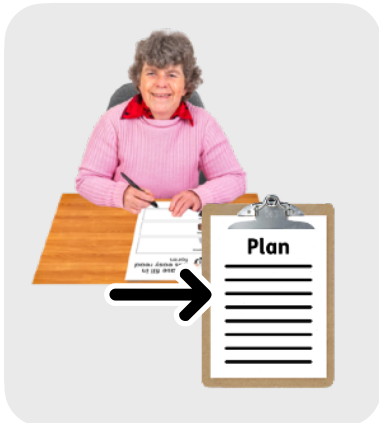
I do not agree to give my  
name and contact  
information

If you have agreed to give your name and contact information, please write down the first part of your postcode below. This will help us to understand which area of Surrey you are in:

# Thank you



Thank you for answering these questions.



By answering these questions you are allowing us to use your answers.

We will use your answers to help us plan our activities for this project.



If you would like your own copy of your answers please tell us your email address:

We will not share your email address with anyone else.

# Further help

If you need these questions in a different format please contact us by:



- Phone: 0300 200 1005



- Text message - this is if you are deaf or have trouble with hearing: 07527 182 861



- Email:  
contactcentre.adminhub@surreycc.gov.uk

This Easy Read information has been produced by [easy-read-online.co.uk](http://easy-read-online.co.uk)