

Proposal to open a Specialist Centre (SEN Unit) at Chandlers Field Primary School

Consultation Meeting

3 March 2021



The Proposal

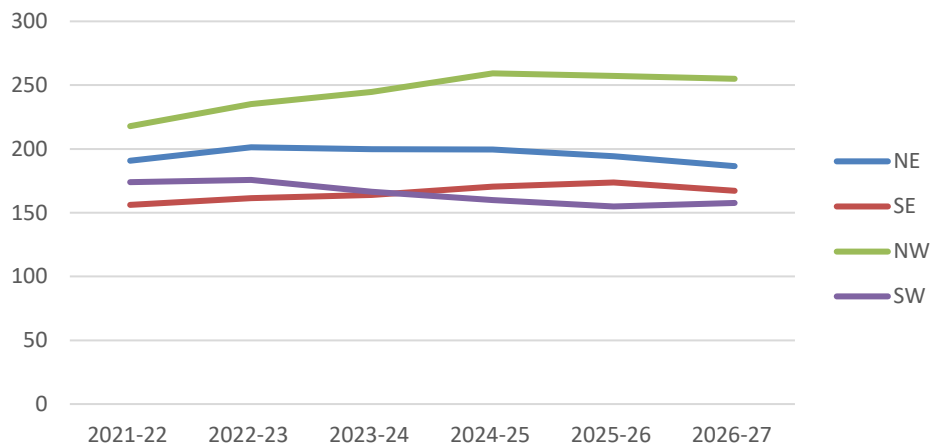
- To open a 25 place Specialist Centre (SEN Unit) for primary pupils with an Education Health and Care Plan (EHCP) and who have Autism or Autistic Spectrum Conditions (ASC) in Surrey. This designation is known locally as High COIN.
- A bespoke building would be provided for the specialist centre, located within the school grounds.



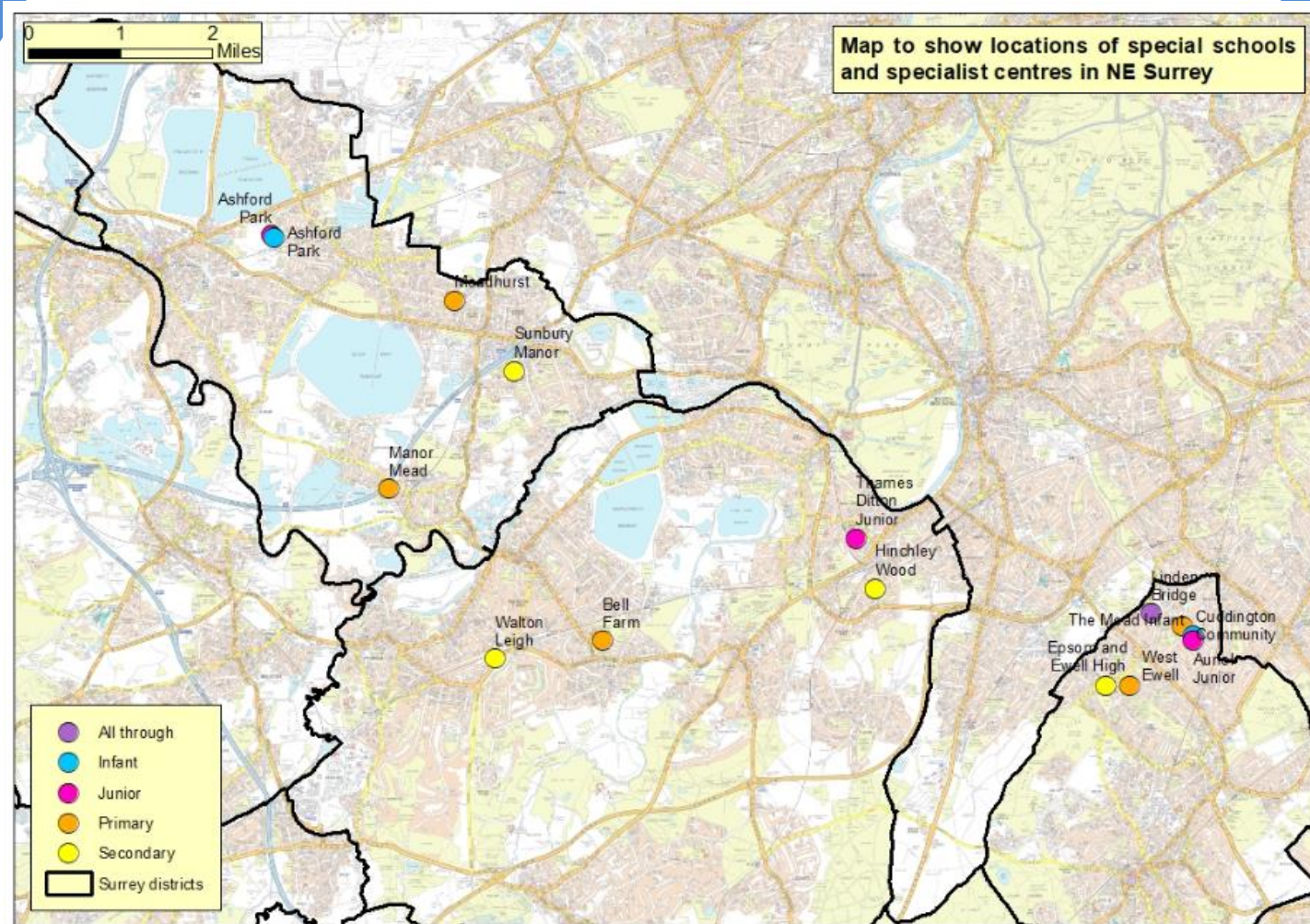
Demand for Specialist Places North East Surrey

Latest projected sufficiency modelling for academic years 2021-2022 to 2026-2027 indicates sustained demand for primary age ASD specialist places of approximately 190 to 200 in the NE quadrant of the county, with a peak of up to 200 anticipated in 2024-25.

Demand for specialist primary (NCY R-6) places
from children with a primary need of ASD



Specialist Places in North East Surrey



What We Want to Achieve

Our vision is that children in our high needs Communication and Interaction provision will have the best opportunities to settle and access core subjects in the morning, and then integrate into the mainstream school for lessons in the afternoon when they are ready to – either with support, or independently, depending on their level of need.

Our provision will offer a well-structured, multi-sensory, empathetic approach to learning built around the needs of each individual and delivered by a nurturing, caring team with expertise in supporting children with SEND.



What We Want to Achieve

Children are at the heart of everything we do and every decision we make. Our vision to deliver an education for all, and our focus on the needs of the whole child, means that with the High COIN provision in place, we are hoping to offer opportunities for some of our mainstream children to access nurture groups in the provision in the afternoon. This further enhances and underpins our vision for being truly inclusive and demonstrates that the provision will benefit the whole school community.



What We Want to Achieve

We are committed to working with Surrey County Council and ensuring that children who are struggling to access the mainstream curriculum have the best opportunity to have their academic and social/emotional needs successfully met, through the development of a High COIN Provision at Chandlers Field School. By working in partnership with Surrey County Council and with parents and carers, we will give every child access to the high-quality education that they deserve.



SEND Capital Programme

The development of the proposed SEN unit at Chandlers Field Primary School is part of a suite of proposals being developed by Surrey County Council to deliver a step change in the number of places for learners who have complex SEND in local Special Schools and Specialist Centres.

[SEND Capital programme 29 Sept 20](#)

[SEND Capital Programme Phase 3 2021- Cabinet Report.pdf](#)



Timeline

Informal consultation published
22 February – 19 April 2021

Statutory notices published
26 April – 25 May 2021

Lead Cabinet
Member for All Age
Learning Decision –
8 June 2021



How to respond to the consultation

To submit a response to the consultation please fill in the online survey which can be found at www.surreysays.co.uk

Alternatively you can complete a paper copy and either post your response to the address on the form or scan a copy and email to schoolorg@surreycc.gov.uk



Questions

