



what's **your**
next
move?



Employability

NYA Quality Mark

Open
access

Community Youth Work

Targeted
group work

1-1

Ready for Work

Healthy Young Surrey



Epsom & Ewell

Youth Work Needs Assessment

Area Overview

The borough of Epsom and Ewell is located in the North East of Surrey and is bordered by the Royal Borough of Kingston upon Thames, the London Borough of Sutton, Reigate and Banstead and Mole Valley. Epsom and Ewell has a population of 75,102 people of whom 9,400 are aged 10-19 (7.1% of the Surrey 10-19 year old population). This number is forecast to increase by 3% over the next five years. 96.24 % of the borough is urban and with 22 people per hectare, it has the highest population density in Surrey. There are people in the Borough from many ethnic group and those for which English is a second language including- Portuguese, Mauritian. Politically, the Residents association hold 31 of the 38 available seats, at a borough level.

This area is a prime commuter location for people working in central London. Although Epsom and Ewell is perceived as largely affluent area, there are some very clearly defined pockets of deprivation within the borough in particular Ruxley ward- Watersedge Estate, Court ward -Longmead estate.

There are a number of parks, open spaces and independent youth facilities that are active in the community including the Stephen Woods Centre adjacent to the Longmead estate and various youth projects run by local churches including the Trix Cafe in Stoneleigh. Surrey Police have an active presence in the borough along with Epsom and Ewell Borough Council who run a number of opportunities. Other facilities include skate parks and a number of highly used green spaces that are used by young people.

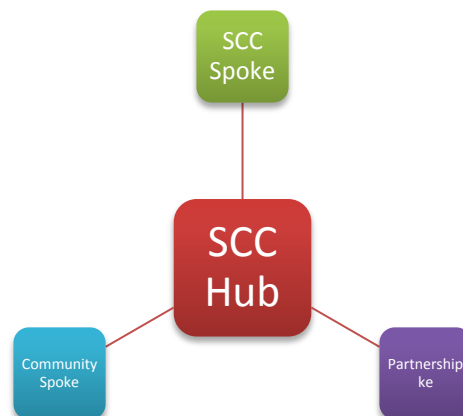
There are four secondary schools in the borough, a private school, a Pupil Referral Unit, the University of Creative Arts and Nescot College.

Community Youth Work- Aims and Objectives

In September 2014, Surrey County Council's Cabinet approved Services for Young People's commissioning model for 2015-2020 to deliver the strategic goal of employability for all young people in Surrey. To achieve this goal, the Community Youth Work Service (CYWS) will target areas where there is the greatest risk of young people not making a successful transition into employability.

Previously, Surrey County Council has allocated resources equally to each youth centre across the county. The Community Youth Work Service has now adopted a needs based model that directs resources according to need. This need has been identified through the analysis of data relating to youth crime, NEET figures, Risk of NEET Indicators (RONI), health indicators, deprivation and transportation. Further information on need has been sought from local partners, stakeholders and young people. By allocating resources in this way, it may mean that youth work is not always delivered from centres. This will be achieved primarily through open access youth work with a further commitment to provide Early Help, Healthy Young Surrey, Ready for Work and NEET prevention.

The new service will work through a 'Hub and spoke' approach (see diagram below).



The 'SCC Hub' will be located in the area of highest need and will be where most of the SCC youth work resources will be allocated. There will also be areas where partnership work with other youth providers will be possible and a joined up, holistic approach to the needs of young people will be delivered in partnership and therefore reduce the level of CYWS resource (partnership spoke). The third spoke is a community offer where support will be offered to the community to take ownership of

the needs, again supported through SCC in the form of equipment, training or premises.

The Community Youth Work Service offers a more flexible approach to delivery and gives greater freedom to work where the need is by moving away from the centre-based model.

Current contextual Information

Epsom and Ewell currently has 3 youth centres: Focus and Yo-Yo in Epsom town centre and The Edge which is located in Watersedge (Ruxley Ward). Current provision includes open access work, programmes accredited through ASDAN and the Duke of Edinburgh Scheme, arts work (music, photography and drama), babysitting courses and a group young people who undertake fundraising for charity.

Staffing allocation for 2014-15:

| Name of Youth Centre | No. full time hours | No. part time hours |
|--------------------------|---------------------------------------|---------------------|
| The Edge, West Ewell | 37 hrs (1 FT Community Youth worker) | 37 hrs |
| Focus, Epsom | 37 hrs (1 FT Community Youth worker) | 37 hrs |
| Yo-Yo(Longmead outreach) | | 21 hrs |
| Total | 74 hrs (2 FT Community Youth workers) | 95 hrs |

The staffing allocation for 2015-16:

Staffing is now allocated to the whole borough rather than specific centres.

| | No. full time hours | No. part time hours |
|---------------|---------------------------------------|---------------------|
| Epsom & Ewell | 74 hrs (2 FT Community Youth workers) | 68 hrs |

Further financial details are included in appendix 1.

Existing Offer in Epsom and Ewell delivered by CYWS

The provision currently delivered in the borough is:

The Focus

- Music studio-recording, tutoring and performance
- Short accredited courses- photography and babysitting
- Epsom Youth Theatre (EYT)
- Voice project-volunteering and social action
- Outreach to Longmead (recently on hold due to staff leaving)

The Edge

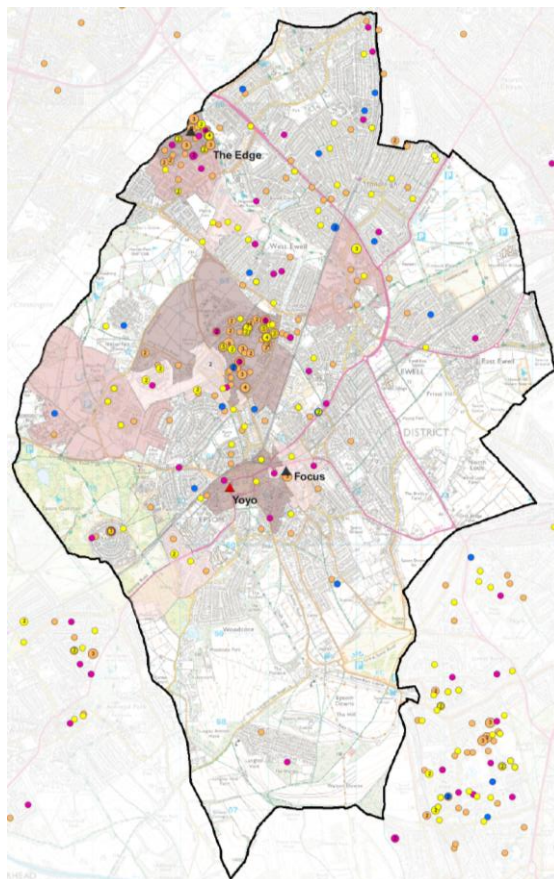
- Open sessions-currently delivered via outreach
- Targeted project work ie-bike project, music studio
- Duke of Edinburgh.

Epsom and Ewell data analysis

Young people in Epsom & Ewell who were NEET, RONI or had received a YRI or substantive outcome as a result of offending during 2013-14

Court ward (Longmead Estate) has the highest number of young people who are Not in Education, Employment or Training (NEET), highest level of deprivation and highest number of young people who have Youth Restorative Intervention.

Following this, Ruxley ward (including the Watersedge estate) also has high numbers in these areas as shown on the map below. There are a number of YRIs recorded for young people in Town.



| Type | No. young people per postcode | Top 30% most deprived LSOAs in Surrey |
|-----------------------|-------------------------------|---------------------------------------|
| ● NEET | ○ 1 | ■ Top 10% most deprived areas |
| ● Substantive Outcome | ○ 2 | ■ 11-20% most deprived areas |
| ● YRI | ○ 3 - 5 | ■ 21-30% most deprived areas |
| ● R4W | ○ 6 - 8 | |
| ● RONI | ○ 9 - 12 | |

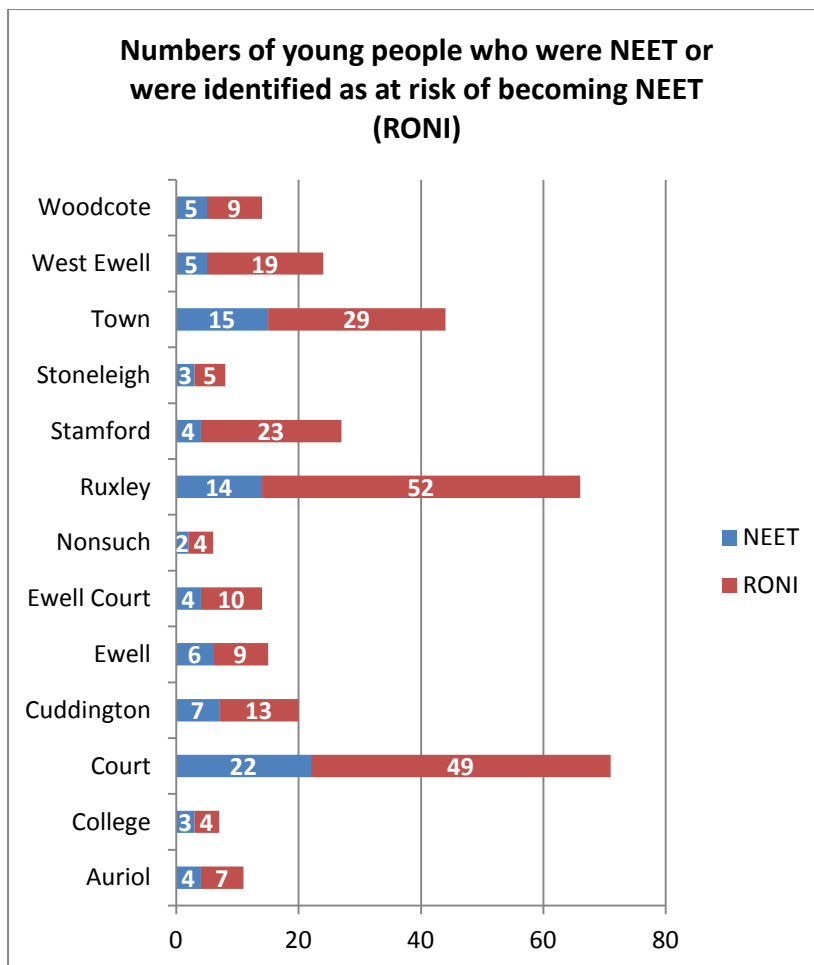
(Source: IMD 2010)

Employability

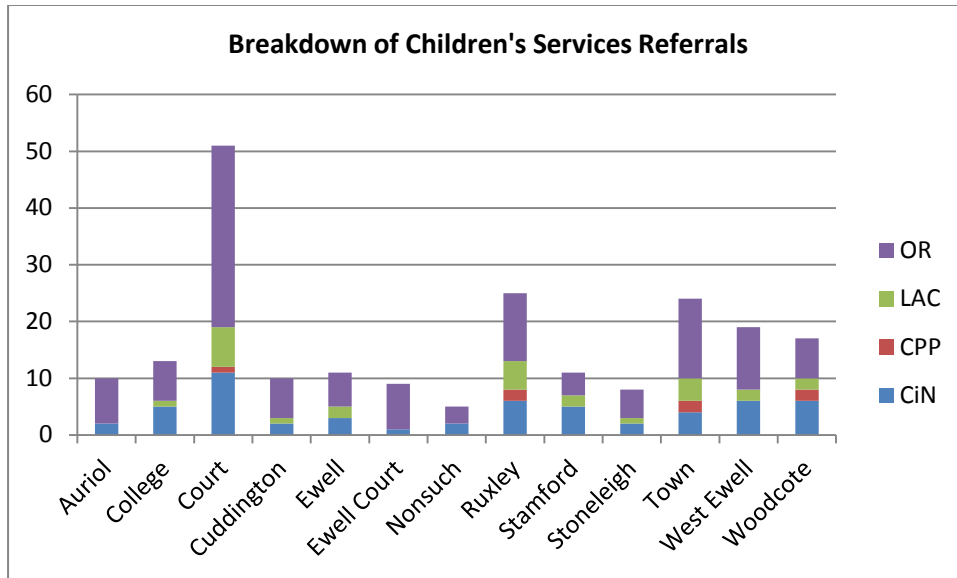
The Community Youth Work Service contributes to the overall goal of Services for Young People which is employability for all young people. In looking at the data relating to employability I examined the following categories:

- The number of young people who are currently NEET
- The number of young people who display Risk of NEET indicators(RONI)
- Number of Children living in Out-of-work Benefit Claimant Households

The graph below shows the numbers of young people each ward of Epsom and Ewell who are NEET or have been identified as RONI. Again, this highlights that Ruxley (Watersedge) and Court (Longmead) wards have the highest numbers of young people who will need additional support to ensure their successful transition into employment, education or training.



Children’s services referrals



Young people are referred to children’s services for a number of reasons child in Need, Protection plans and looked after children we can see from the graphs that again Court ward, Ruxley ward and Town have highest numbers of needs.

Health

In Epsom and Ewell the total estimated smokers age 11-17 is 724- 30% of whom 11-15.

Teenage conceptions- In 2013 there were 18 conceptions with 78% leading to abortion, highlighting the need for sexual health preventive education. There is currently a sexual health clinic facility in Epsom town centre.

Mental health

About 7,500 people suffer from a common mental health disorder from the borough; more than 10,000 Epsom and Ewell residents suffer with long term illness. Historically a number of in-patient mental health provision was situated in the Borough which has been closed.

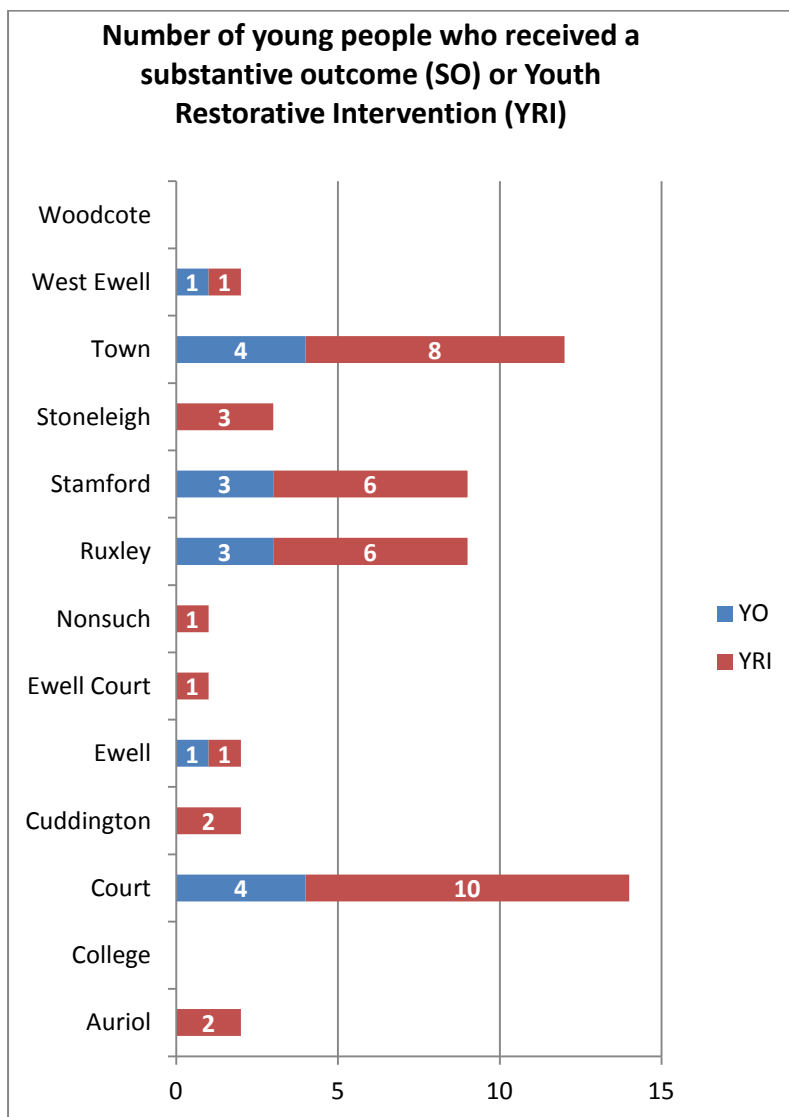
Crime

Borough info

The graph below shows Court and Town wards have higher numbers of YRI's. In 2013 – 2014 Crime in Town increased where 45% of the Borough's theft was recorded and Court ward where 20% of the Borough's criminal damage was recorded. **Could have impact on young people living in this environment.**

Young people

In 2013-2014 2,300 incidents of anti social behaviour (ASB) were reported half of these were for rowdy or inconsiderate behaviour, of these 400 were youth related ASB and over a quarter from Court ward.



Domestic violence

There were more than 800 incidents of domestic violence recorded in the borough from 2013-2014(Oct-Oct) highest levels of these were in Court, Town and Ruxley wards.

Deprivation

Court ward includes the most deprived area in the borough which ranks 7th in Surrey,

According to the 2010 Index of Multiple Deprivation (IMD 2010), the most deprived areas in Epsom and Ewell are the Longmead area in Court ward and the Watersedge area in Ruxley. These are ranked in the most deprived 50 of the 709 super output areas in Surrey.

In 2013/14, 60 households were accepted as being homeless and in priority need. In March 2014, there were 139 households accommodated by the local authority in temporary accommodation.

According to the 2011 Census there were 300 families in Epsom and Ewell headed by young adults aged under 25. 120 of these were lone parent families who may need extra support

In May 2014, 2,200 adults in Epsom and Ewell were receiving out of work benefits (4.5% of the population aged 16-64). This included 420 jobseekers and 290 lone parents with the rest receiving Employment and Support Allowance (ESA) or incapacity benefits. The highest number (430) were in Court ward. 250 benefit claimants were aged under 25. In May 2013, more than 1,000 children (6.9%) were living in families in receipt of out of work benefits. Highest levels again were Court ward and Town and Ruxley ward.

Education

According to the 2011 Census, 3,850 Epsom and Ewell residents aged 25-64 (10%) had no qualifications and a further 5,300 (13%) had less than 5 GCSEs grade A* to C or equivalent. Poorly qualified adults are particularly prevalent in Ruxley, Ewell

Court and Court wards. Around 30% have low or no qualifications in the most deprived areas. In 2013, 74% of Epsom and Ewell pupils achieved 5 or more GCSE grades A* to C including English and maths, but in the lowest performing areas only 59% achieved these results.

Source: DfE, GCSE and Equivalent Results for Young people (Referenced by Location of Pupil Residence), 2012/2013

In 2012-13 Epsom and Ewell pupils missed 1% of half days due to unauthorised absence. However in the most deprived parts of the borough 2.3% of all half days were missed through unauthorised absence and more than 8% of pupils were persistent absentees. In the most deprived parts of the Borough- Ruxley and Court ward 1 in 12 pupils are persistent absentees.

Source: Department for Education

Feedback from young people

- Young people don't feel safe going to the Edge youth centre on the Watersedge estate because of the older young people, and criminal damage.
- We would like a session where we can drop in and spend time together.
- Young people are prepared to travel round the Borough more, before young people preferred to stay on their estates.
- Young people wanted more opportunities to make friends
- Worried about peers taking drugs and drinking alcohol
- Wanted independent living skills
- More career guidance

Key priorities identified by the Epsom and Ewell task group 2013

- English as an additional language (EAL)-A high number of families in the area around Epsom Primary school and Stoneleigh have EAL needs which can present as a barrier to participation.
- Mentors and role models- some young people need highly developed role models and mentoring opportunities to support them to make a successful transition post 16.
- Mental health-some young people have mental health needs, including social skills and low self esteem, as well as low aspirations and motivation.
- The neighbourhoods they highlighted were Longmead, Watersedge.

Feedback from partners, stakeholders and local community

These include- police, leisure, partnerships officer, schools, YSS

Points raised were:

- Younger young people need to be worked with, some are in fear of the older ones.
- There is borough movement with the young people they don't stay on the same estates
- Petty crime-including bike crime, drinking, drugs
- Concerns re Child Sexual Exploitation (CSE)
- Young people struggling with mental health- anxiety, self harm
- Some intervention at Longmead with The Beat
- At Watersedge there is ASB and the Community don't feel safe.
- Non-school attendance can be a problem in the Borough.
- Watersedge-Ruxley and Longmead-Court high need

Analysis

Main findings from data analysis and feedback

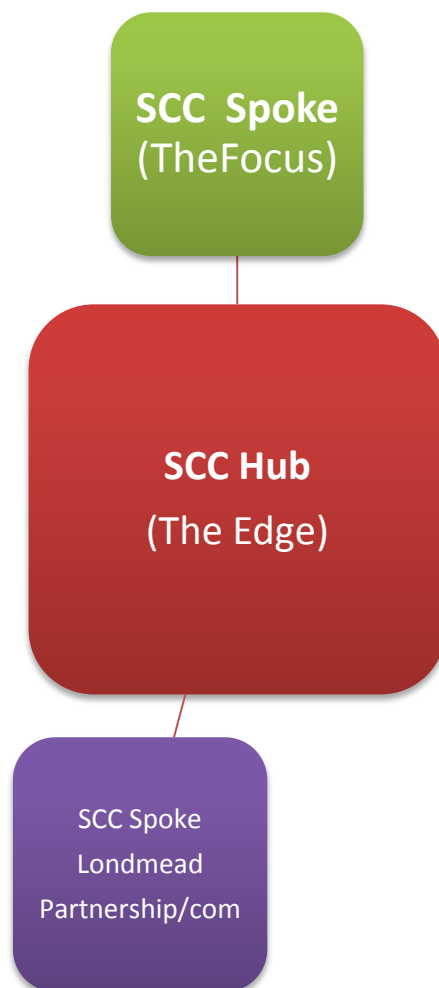
- Court, Town and Ruxley wards high levels of anti-social behavior from young people and adults
- Court, Town and Ruxley ward high level of domestic violence
- Court, Town and Ruxley highest areas for deprivation levels.
- Health issues to address including sexual health service prevention, drugs and smoking.
- Mental health issues to address including the need to raise self esteem, social skills, independent living skills, aspirations, motivation.
- Anti social behavior around bike crime, drinking drugs –Crime diversion and awareness needed.
- Need to build links with multi-cultural population where English is a second language.

- Education –there could be a culture of low attainment due to figures for adults being low in the wards of Ruxley, Court and West Ewell
- Education attendance is low in the most deprived areas of Epsom and Ewell

Proposed response to need

From the data provided, the service proposes to address employability by focusing on 3 aspects of need:

- Health
- Crime
- Deprivation
- Raising aspirations



| | 1.4.14 – 31.3.15 (Centre-Based Youth Work- old model) | | 1.4.15 – 31.3.16 (Community Youth Work Service- New Model) | | |
|-----------------------------------|--|--------------------|--|--|--|
| The Edge Watersedge Estate | hours 2.5 hrs | Open access | Hours 2.5hrs | Open access | Response to SCYW delivery model and young people |
| Edge | 2.5 hrs | Project work bikes | 2.5 hrs | Open access with crime diversion targets | Address higher than average YRI issues in area |
| Edge | 2.5 hrs | Duke of Edinburgh | 2.5hrs | Duke of Edinburgh | Peer role model development and governance development |
| Edge | | | 2.5 hrs | Open access with health targets | Improve health of young people and response to yp needs |
| Borough based | | | 5 hrs | Early help | In response to early help agenda in conjunction with YSS |
| Longmead-Court ward | 21 hrs | Outreach | 2.5 hrs | Outreach in Court ward | Partnership work in high deprivation area in response to |

| | | | | | |
|---------------------|-----------|---------------------------------|------------------------------------|---|--|
| | | | | | identified needs |
| Focus | | | 2.5 hrs | Open Access-drop in | Response to SCYW delivery model |
| Focus | 9 hrs | Music project | 12 hrs | Open access with targeted elements- music project | Addressing deprivation and mental health issue, NEET/RONI figures. |
| Focus | 3 hours | Project work- Youth theatre | 3 hrs | Open project work- youth theatre | In response to Need planned with young people |
| Focus | 2.5 hours | project work group- babysitting | 2 hours Can increase first aid. | Open project work- babysitting | Address Deprivation and NEET / RONI figures. Peer project. |
| Focus | 2 hrs | Project- The Voice | 2 hrs | The Voice governance group | Provide governance , shape programme. Peer project. |
| Focus | 3 hrs | Photography targeted group. | | | |
| Borough wide | | | 3 hrs | Photography –open project work | In response to young peoples needs |

Allocation of staffing for 2015-16: 2 fulltime workers and 68hours part time for the Borough

Partnership links

The CYWS will continue to foster positive relationships with a range of partnership organisations to further improve the outcomes achieved by young people in Epsom and Ewell. These organisations include:

- The Youth Support Service
- Epsom & Ewell Borough Council-Leisure, partnerships
- The Beat
- YMCA-East Surrey including Heads Together
- Sure Start Centre/Children's centres
- Voluntary, faith and community organisations
- Local Councillors
- Language support service cultural awareness links-gypsy support.
- Police
- Local secondary schools, colleges PRU.

Appendix 1

Budget information

| Epsom and Ewell | | | 1-Apr-15 | | |
|--------------------|------------------------------|-------------|----------|------------|-----------------|
| Budget 14/15 | Budget 15/16 | Current FTE | Post | FTE | Cost |
| £123,730.00 | £113,802.00 | 3.9 | SP | 0 | £NA |
| Vacancy £30,921.64 | | | Y&CW | 2 | £79,287.92 |
| | | | NYW | 0 | £NA |
| | | | WiC | 50 | £39,532.11 |
| | | | AYW | 18 | £9,893.14 |
| | | | Totals | 70 | £128,713.17 |
| New | | | Impact | | |
| Post | FTE/Hrs | Cost | FTE Diff | Hours Diff | Cost Difference |
| SP | 1 | £42,189.60 | 1 | | £42,189.60 |
| Y&CW | 1 | £40,040.40 | -1 | | -£39,247.52 |
| NYW | 0 | £0 | 0 | | £- |
| WiC | 50 | £39,532.11 | 0.0 | 0.0 | £- |
| AYW | 18 | £9,893.14 | 0.0 | 0.0 | £- |
| Totals | 68 part time and 2 full-time | £131,655.25 | -1 | 0.0 | 2,942.08 |
| Remain | -£17,853.25 | | | | |
| Spent | | | | | |
| Budget | £110,795.00 | £131,655.25 | | | |

Reference of information

Epsom and Ewell Needs analysis report 2014.

Surrey i- 2012-2013

Surrey i-2013-2014

Epsom and Ewell task group findings 2013

Questionnaire feedback young people 2015

Questionnaire feedback staff, stakeholders, community.2015

DofE, GCSE and Equivalent Results for Young people (Referenced by Location of Pupil Residence), 2012/2013