

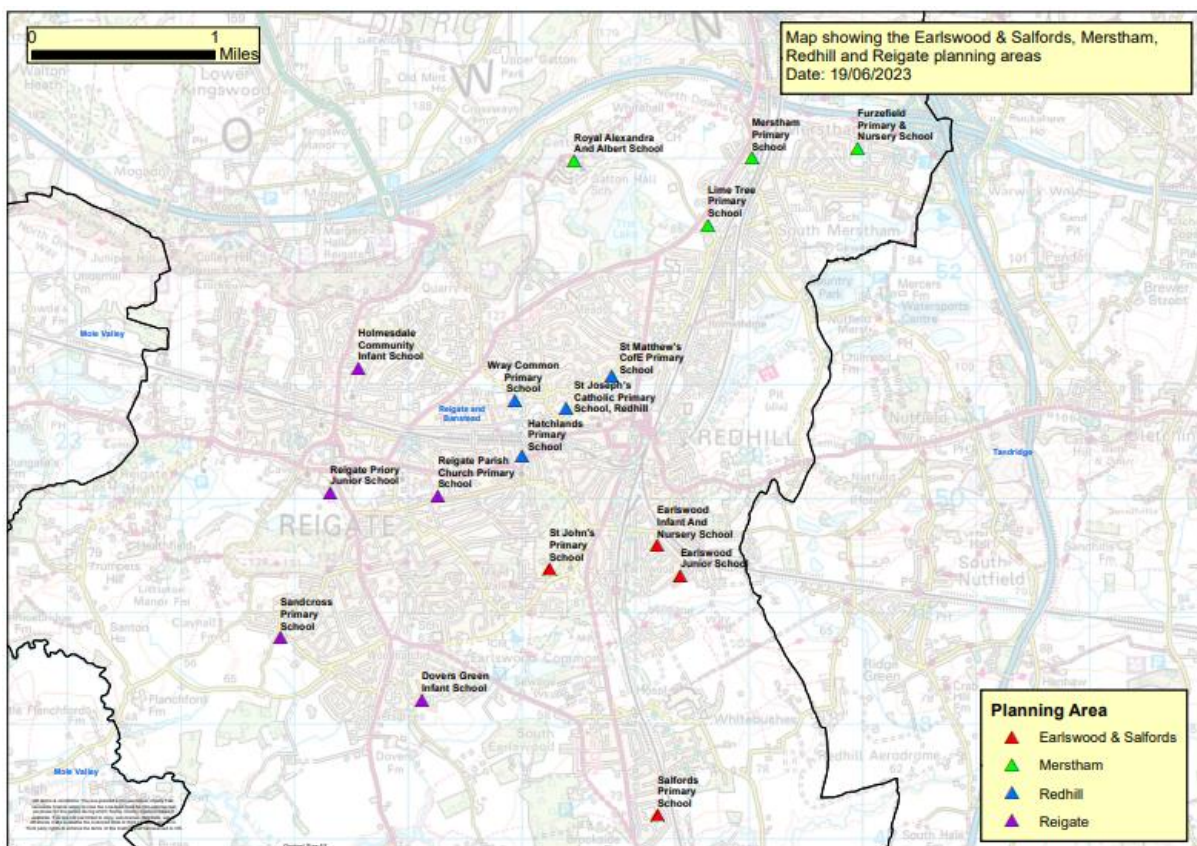
Annex 4 Education needs analysis of primary school places in Reigate and neighboring areas

Current situation

Reigate Priory Junior School is in the pupil planning area of Reigate. The neighbouring planning areas are Redhill, Earlswood & Salfords and Merstham.

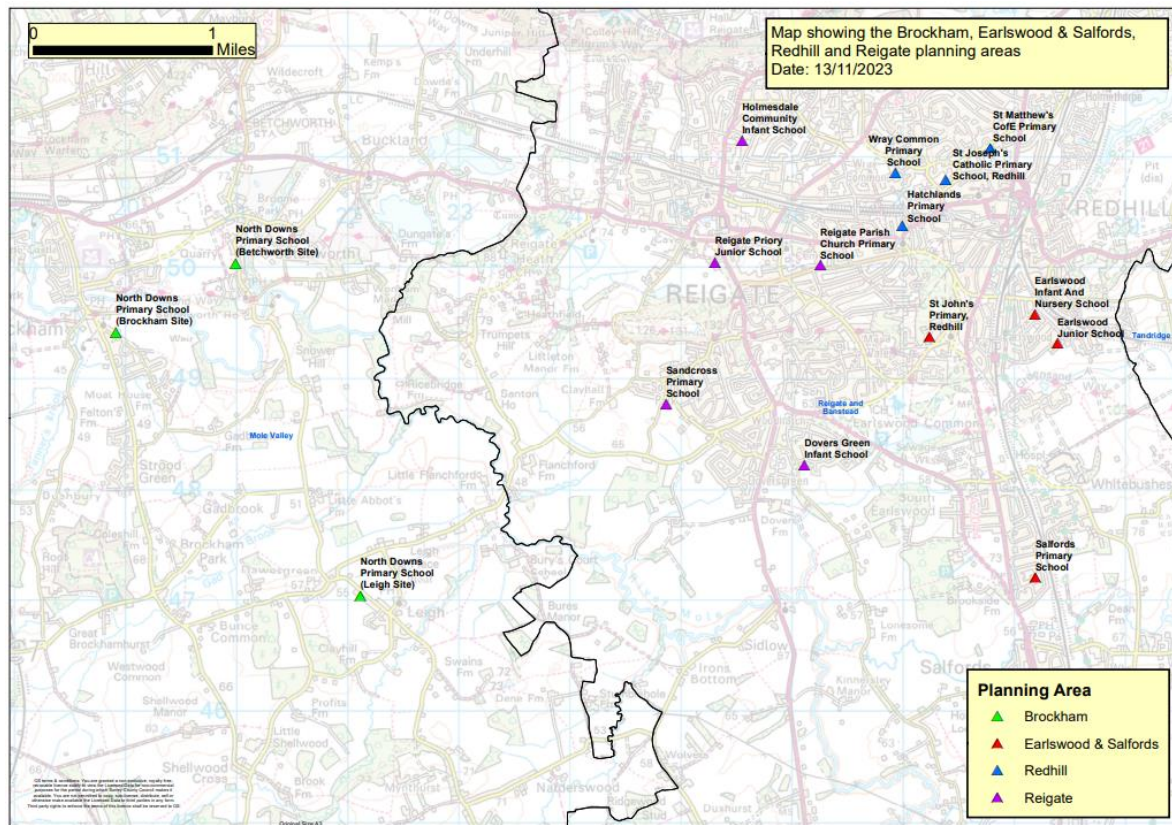
The map below shows Reigate Primary planning area and neighbouring planning areas within Reigate & Banstead.

Map 1: Primary planning areas map – Reigate, Redhill, Earlswood & Salfords and Merstham



Map 2 below shows the planning area of Brockham which is the nearest planning area to the west of Reigate. North Downs Primary School is a two form entry school on three sites shown below. All pupils in years 3 to year 6 are based at the Brockham site which is over 5 miles away from schools in the Reigate planning area. A small number of pupils who live in the wards of Reigate and South Park & Woodhatch attend North Downs Primary School.

Map 2: Primary planning areas map – Reigate, Redhill, Earlswood & Salfords and Brockham



Sustainability Strategy and School Organisation Plan

The [Sustainability Strategy](#) sets out Surrey County Council's approach and commitment to ensuring the sustainability of all our settings and schools. Following national trends, falling birth rates mean that the number of school places is expected to fall in primary schools in most areas across Surrey over the forecast period. As schools receive per pupil funding and plan staffing and resources based on their published admission number (PAN), if there are too many school places in an area schools become vulnerable to financial difficulties. Therefore, Surrey County Council shares forecasts annually with schools across planning areas to consider increasing or reducing the number of places in an area. The [School Organisation Plan 2022-2032](#) sets out Surrey County Council's plans for providing education close to home. It highlights the likely demand for school places over a 10-year forecast period and likely strategies or changes that may be required to both meet the statutory duty to provide sufficient school places and ensure the sustainability of all schools. Admission Authorities publish admission arrangements annually and any reduction in PAN is subject to public consultation in line with the [School Admissions Code 2021](#).

Current capacity in the Reigate planning area

There are 5 schools in the primary planning area of Reigate. 2 Infant Schools, 1 Junior School and 2 Primary Schools (1 with an additional intake in Year 3).

There is capacity for 11 forms of entry (330 places per year group) across the 5 schools. The forecasts show a sustained need for 10 forms of entry in the area (300 places per year group). Only 4% vacant places were reported across all schools in the planning area in the School Census January 2023. The number of pupils is lower in year R and year 1 following a fall in birth-rates. This is expected to reduce further hence the reduction in PAN at Holmesdale Community Infant School from September 2023.

Figure 1: School census January 2023 – number of pupils at schools in the Reigate planning area

	Yr R	Yr 1	Yr 2	Yr 3	Yr 4	Yr 5	Yr 6	Yr R - Yr 6
Total Number of pupils in planning area	307	301	323	311	317	323	325	2207
Planned Primary Places	330	330	330	330	330	330	330	2310
Vacant Primary Places	23	29	7	19	13	7	5	103
Vacant Primary Places (%)	7%	9%	2%	6%	4%	2%	2%	4%

Current capacity in the Redhill planning area

Redhill planning Area is the closest neighbouring area to north Reigate and Holmesdale Community Infant School. There is capacity for 9 forms of entry (270 places per year group) across the 4 schools. The School Census January 2023 shows that currently with 9 forms of entry in the area there is 9% vacant places across all schools. The number of pupils is lower in year R and year 1 following a fall in birth-rates. This is expected to reduce further as the forecasts show between 64 -78 (over 2 forms of entry) surplus places in year R over the forecast period.

Figure 2: School census January 2023 – number of pupils at schools in the Redhill planning area

	Yr R	Yr 1	Yr 2	Yr 3	Yr 4	Yr 5	Yr 6	Yr R - Yr 6
Total Number of pupils in planning area	238	237	263	234	235	228	202	1637
Planned Primary Places	270	270	270	270	270	240	210	1800
Vacant Primary Places	32	33	7	36	35	12	8	163
Vacant Primary Places (%)	12%	12%	3%	13%	13%	5%	4%	9%

Forecasts for the Reigate primary planning area

The table below shows the number of children expected to come forward into Reception and year 3 over the forecast period, alongside the number of places available in those year groups across all schools in the planning area of Reigate.

The forecasts include demographic trends, the birth rate and mid-year population estimates, and the effects of pupil movement trends (between schools, in and out of

boroughs/districts/county etc) as well as additional pupil yield from housing calculated from housing permissions and trajectories provided by the borough/district council. This projection shows forecast pupil numbers if all housing comes forward as and when planned, but this cannot be guaranteed.

The school-based report allows us to show how many pupils are predicted to need a mainstream school place across a group of schools in a planning area. Residence based reports are included later in this document and allow us to show how many pupils living in a ward in Surrey are expected to need a mainstream school place across the whole of Surrey.

Figure 3: Number of places forecast in year R and year 3 from Sept 2023 to Sept 2031 (Edge forecasts published November 2022)

Reigate						
School year	Year R places	Year R Forecast	Surplus / Deficit	Year 3 places	Year 3 Forecast	Surplus / Deficit
2023-24	300	281	19	330	314	16
2024-25	300	289	11	330	292	38
2025-26	300	280	20	330	284	46
2026-27	300	278	22	330	274	56
2027-28	300	280	20	330	280	50
2028-29	300	281	19	330	273	57
2029-30	300	281	19	330	274	56
2030-31	300	280	20	330	276	54
2031-32	300	279	21	330	276	54

School name	Year R Places	Year 3 Places
Holmesdale Community Infant School	90	
Dovers Green School	90	
Reigate Priory Community Junior School		150
Sandcross Primary School	60	120
Reigate Parish Church Primary School	60	60
Total places in planning area	300	330

It is noted that due to a decline in birth rates Holmesdale Community Infant School reduced from 4 forms of entry (Published Admission Number (PAN) of 120) to 3 forms of entry (Published Admission Number (PAN) of 90). Therefore, the number of places in year R reduced from 330 to 300 in the primary planning area of Reigate in September 2023. It is being considered whether there should a reduction of junior places in Sept 2026 to match the reduced number of infant places from Sept 2023. Any reduction in PAN would be subject to consultation in line with the [School Admissions Code](#). A reduction in PAN is not permanent and admission authorities can increase back to the original capacity in future years.

Neighbouring planning areas

Figure 4 shows the forecasts for the four primary planning areas closest to Reigate. There are expected to be 24% -29% surplus places in year R in Redhill over the forecast period, 21% to 28% in Earlswood & Salfords, 14% - 27% in Merstham and 0 – 10% in Brockham. The forecasts below are school-based which means they predict the number of pupils who are expected to need a school place across a group of schools. As there are approximately 2 forms of entry surplus places forecast in Redhill and in Earlswood & Salfords, schools in these areas will need to consider reducing their published admission number. The forecasts are based on trends in pupil movement. As the number of places available increases pupil movement is likely to change based on parental preference. In the short-term there will be a need to reduce the number of places across Reigate and the three planning areas below to ensure schools are sustainable. However, the later years of the forecast are less

accurate, and it is not yet known if there will be a long-term need to reduce the number of places across the 4 planning areas. It is important to maintain capacity for future years when numbers could increase.

Figure 4: Number of places forecast in year R and year 3 from Sept 2023 to Sept 2031 in neighbouring planning areas (Edge forecasts published November 2022)

Redhill						
School year	Year R places	Year R Forecast	Surplus / Deficit	Year 3 places	Year 3 Forecast	Surplus / Deficit
2023-24	270	206	64	270	252	18
2024-25	270	197	73	270	245	25
2025-26	270	196	74	270	232	38
2026-27	270	194	76	270	218	52
2027-28	270	194	76	270	208	62
2028-29	270	194	76	270	209	61
2029-30	270	193	77	270	208	62
2030-31	270	192	78	270	207	63
2031-32	270	192	78	270	206	64

School name	Year R places	Year 3 places
St Matthew's CoFE Primary School	60	60
Hatchlands Primary School	60	60
Wray Common Primary School	60	60
St Joseph's Catholic Primary School, Redhill	90	90
Total places in planning area	270	270

Key	
Over 5 surplus places	
Between -5 deficit and 5 surplus places	
Over -5 deficit places	

Earlswood & Salfords						
School year	Year R places	Year R Forecast	Surplus / Deficit	Year 3 places	Year 3 Forecast	Surplus / Deficit
2023-24	210	165	45	210	177	33
2024-25	210	160	50	210	175	35
2025-26	210	155	55	210	175	35
2026-27	210	154	56	210	167	43
2027-28	210	154	56	210	163	47
2028-29	210	153	57	210	159	51
2029-30	210	152	58	210	158	52
2030-31	210	152	58	210	157	53
2031-32	210	151	59	210	156	54

School name	Year R places	Year 3 places
Salfords Primary School	60	60
Earlswood Infant and Nursery School	120	
Earlswood Junior School		120
St John's Primary School	30	30
Total places in planning area	210	210

Key	
Over 5 surplus places	
Between -5 deficit and 5 surplus places	
Over -5 deficit places	

Merstham						
School year	Year R places	Year R Forecast	Surplus / Deficit	Year 3 places	Year 3 Forecast	Surplus / Deficit
2023-24	150	129	21	210	168	42
2024-25	150	124	26	210	172	38
2025-26	150	119	31	210	172	38
2026-27	150	117	33	210	158	52
2027-28	150	116	34	210	154	56
2028-29	150	115	35	210	149	61
2029-30	150	113	37	210	148	62
2030-31	150	111	39	210	147	63
2031-32	150	110	40	210	145	65

School name	Year R places	Year 3 places
Lime Tree Primary School	60	60
Merstham Primary School	30	30
Furzefield Primary School	60	60
Royal Alexandra and Albert School		60
Total places in planning area	150	210

Key	
Over 5 surplus places	
Between -5 deficit and 5 surplus places	
Over -5 deficit places	

Brockham						
School year	Year R places	Year R Forecast	Surplus / Deficit	Year 3 places	Year 3 Forecast	Surplus / Deficit
2023-24	60	54	6	64	65	-1
2024-25	60	61	-1	64	66	-2
2025-26	60	57	3	64	70	-6
2026-27	60	56	4	64	62	2
2027-28	60	56	4	64	68	-4
2028-29	60	55	5	64	64	0
2029-30	60	55	5	64	63	1
2030-31	60	54	6	64	63	1
2031-32	60	53	7	64	62	2

School name	Year R places	Year 3 places
North Downs Primary School	60	64
Total places in planning area	60	64

Key	
Over 5 surplus places	
Between -5 deficit and 5 surplus places	
Over -5 deficit places	

Residence Based Forecasts

The residence based report shows pupils living in a particular ward who are expected to need a mainstream school place anywhere in Surrey. Only pupils expected to attend mainstream schools in Surrey are included. Pupils expected to attend schools in neighbouring boroughs within Surrey County Council are included but pupils expected to attend a specialist school or SEN Unit in Surrey or attend any out of county or independent school are not included.

Figure 5 shows the number of year R pupils living in each of the local wards surrounding Reigate who attended any mainstream school in Surrey in the previous 4 years and what the expected change is over the next 4 years. The table shows there is expected to be a decrease in the number of places needed in all wards represented on the table.

Figure 5: Residence based report showing number of pupils in year R living in each ward who attended a mainstream school in Surrey in the last 4 years against the number forecast to need a year R place for the next 4 years.

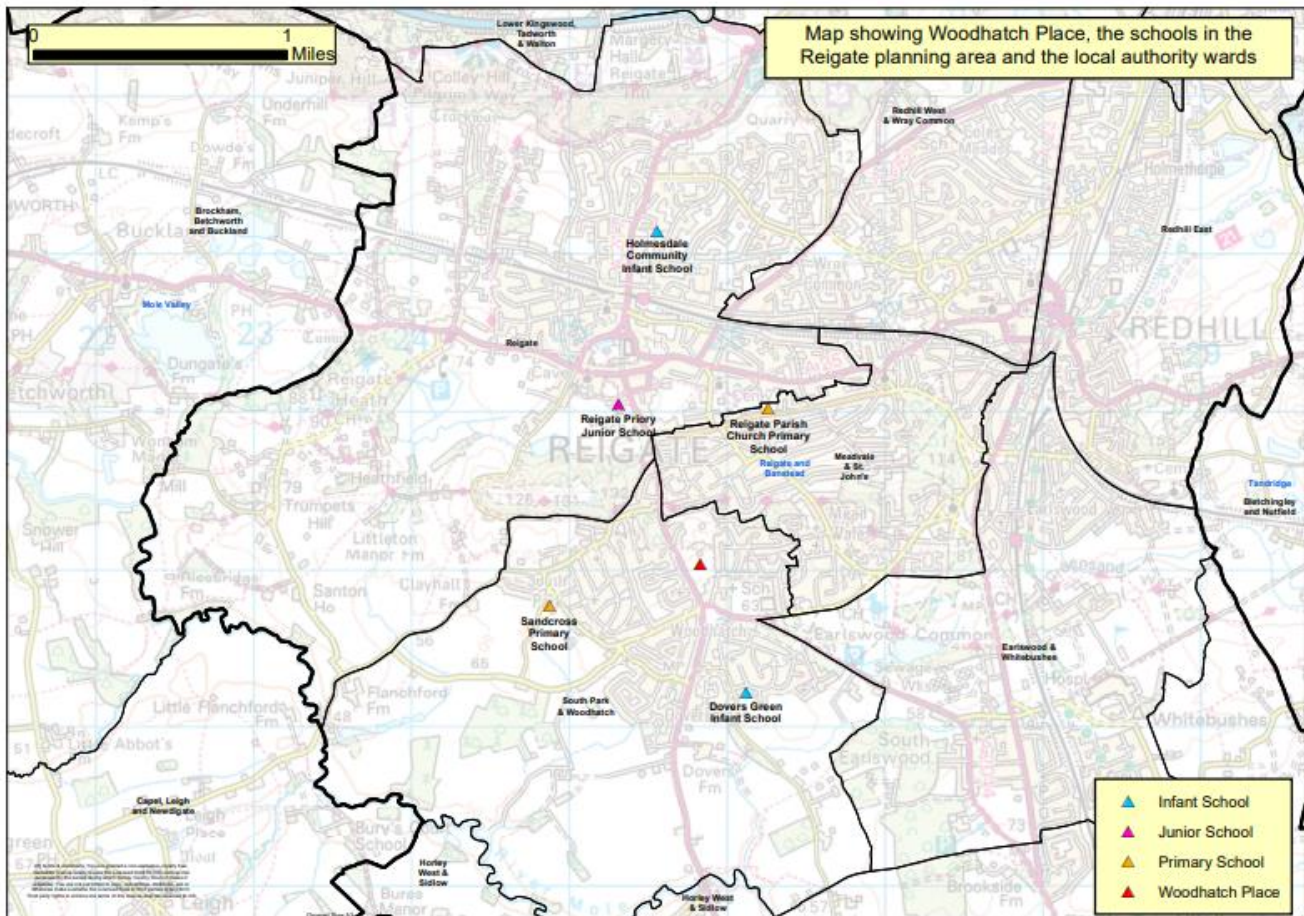
Planning Area	Ward	2019-20	2020-21	2021-22	2022-23	2023-24	2024-25	2025-26	2026-27	Averages		Increase	
										2019 - 2022	2023- 2027	Number of pupils	Percent
Reigate	South Park & Woodhatch	143	126	150	117	120	129	121	120	134.1	122.5	-11.6	-9%
	Meadvale & St John's	108	111	93	95	83	84	85	83	101.7	83.8	-17.9	-18%
	Reigate	113	100	83	94	88	87	88	89	97.5	88.0	-9.5	-10%
	Totals	364	337	326	306	291	300	294	292	333	294	-39	-12%
Redhill	Redhill East	104	134	109	103	105	92	94	93	112.6	96.0	-16.6	-15%
	Redhill West & Wray Common	134	106	118	114	102	99	100	99	118.0	100.0	-18.0	-15%
	Totals	238	240	227	218	207	191	194	192	231	196	-35	-15%
Earlswood & Salfords	Earlswood & Whitebushes	134	133	111	131	122	116	112	112	127.3	115.5	-11.8	-9%
Merstham	Hooley, Merstham & Netherne	108	125	132	137	119	120	111	108	125.4	114.5	-10.9	-9%

Figure 6 shows the number of year R pupils living in each of the local wards surrounding Reigate who attended any mainstream school in Surrey in the previous 4 years and the forecasts up to 2031/32. The table shows there is expected to be a decrease in the number of places needed by pupils in most wards represented on the table, between the first year of the forecast (2022/23) and the last year (2031/32). The area with the smallest decrease (-5%) are the three wards closest to schools in the Reigate planning area.

Figure 6: Residence based report showing number of pupils in year R living in each ward who attended a mainstream school in Surrey in the last 3 years and the forecasts for up to 2031/32

Planning Area	Ward	2019-20	2020-21	2021-22	2022-23	2023-24	2024-25	2025-26	2026-27	2027-28	2028-29	2029-30	2030-31	2031-32	Difference between 2022 and 2031 (First and last)	
															Number of pupils	Percent
Reigate	South Park & Woodhatch	143	126	150	117	120	129	121	120	121	122	122	120	119	2	1%
	Meadvale & St John's	108	111	93	95	83	84	85	83	82	81	81	80	79	-16	-17%
	Reigate	113	100	83	94	88	87	88	89	90	90	91	92	93	-1	-1%
	Totals	364	337	326	306	291	300	294	292	293	293	294	292	291	-15	-5%
Redhill	Redhill East	104	134	109	103	105	92	94	93	92	90	89	89	89	-14	-14%
	Redhill West & Wray Common	134	106	118	114	102	99	100	99	100	101	100	100	100	-14	-12%
	Totals	238	240	227	218	207	191	194	192	192	191	189	189	189	-29	-13%
Earlswood & Salfords	Earlswood & Whitebushes	134	133	111	131	122	116	112	112	112	112	111	110	110	-21	-16%
Merstham	Hooley, Merstham & Netherne	108	125	132	137	119	120	111	108	107	107	105	102	99	-38	-28%

Map 3: Map of schools in the primary planning area of Reigate against local wards



Reigate Priory Junior School is in the Reigate Ward, close to the borders of South Park & Woodhatch, Meadvale & St Johns and Redhill West & Wray Common. The trends across these wards follow national trends in that the number of pupils needing a school place is expected to fall. Both the school-based and residence-based reports show a sustained need for around 300 places per year group (10FE) in the Reigate planning Area.