

SAFETY, HEALTH AND ENVIRONMENTAL INFORMATION	
In addition to the hazards/risks normally associated with the types of work detailed on this drawing, note the following significant residual risks. (Reference shall also be made to the Design Hazard Log)	
CONSTRUCTION	
MAINTENANCE/CLEANING	
USE	
DECOMMISSIONING/DEMOLITION	
It is assumed that all works will be carried out by a competent contractor working, where appropriate, to an approved method statement.	

Notes

PROPOSED REDUCTION FROM 60mph SPEED LIMIT TO 50mph

Rev.	Description	Drwn	Sig.	Date	Chkd	Sig.	Date	Appr	Sig.	Date

North Point

Based upon the Ordnance Survey mapping with permission of the Controller of Her Majesty's Stationery Office © Crown copyright. Unauthorised reproduction infringes Crown copyright and may lead to prosecution or civil proceedings. Surrey County Council LA 07687E 2005.

Drawn by DG Date APR 2022

Checked by originator Date

Approved by Date

A25 SHERE ROAD
SHERE

RURAL ROAD SPEED LIMIT REDUCTION
TRO PLAN

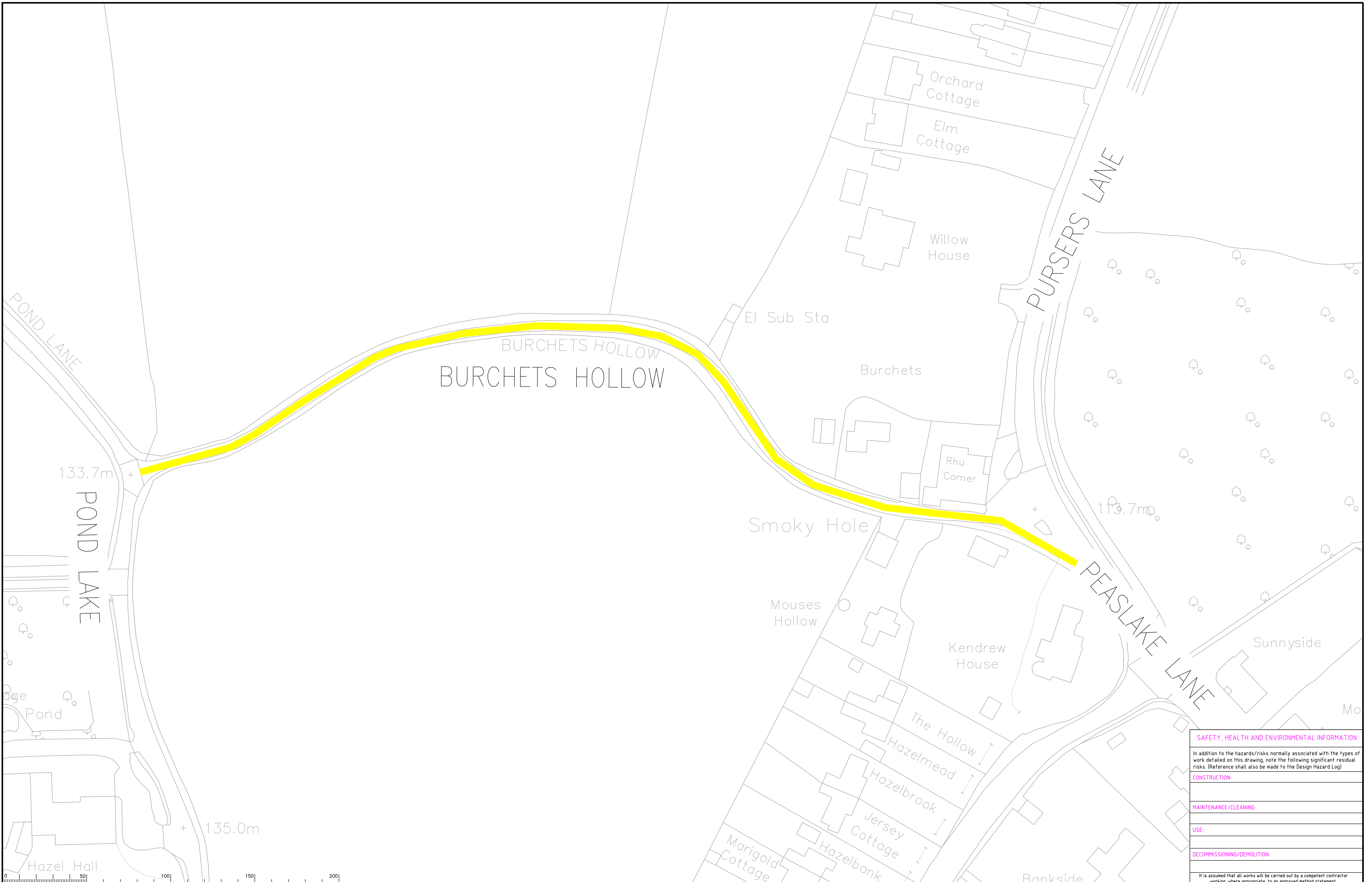
Project No. PC1180

Contract Sheet No. 85

Rev. -

Classification PRESENTATION

SHEET 1 OF 1



Notes

PROPOSED REDUCTION FROM 60mph SPEED LIMIT TO 20mph

Rev.	Description	Drwn	Sig.	Date	Chkd	Sig.	Date	Appr	Sig.	Date

North Point

Based upon the Ordnance Survey mapping with the permission of the Controller of Her Majesty's Stationary Office. © Crown copyright. Unauthorised reproduction infringes Crown copyright and may lead to prosecution or civil proceedings. Surrey County Council LA 076872 2002.

Drawn by	DG	Sig.	DG	Date	MAY 22
Checked by originator	Sig.	Date			
Approved by	Sig.	Date			

Project

D229 BURCHETS HOLLOW
PEASLAKE

Drawing

RURAL SPEED LIMITS REDUCTION SCHEME
TRO PLAN

SHEET 1 OF 1

SAFETY, HEALTH AND ENVIRONMENTAL INFORMATION

In addition to the hazards/risks normally associated with the types of work detailed on this drawing, note the following significant residual risks. (Reference shall also be made to the Design Hazard Log)

CONSTRUCTION

MAINTENANCE/CLEANING

USE

DECOMMISSIONING/DEMOLITION

It is assumed that all works will be carried out by a competent contractor working, where appropriate, to an approved method statement.

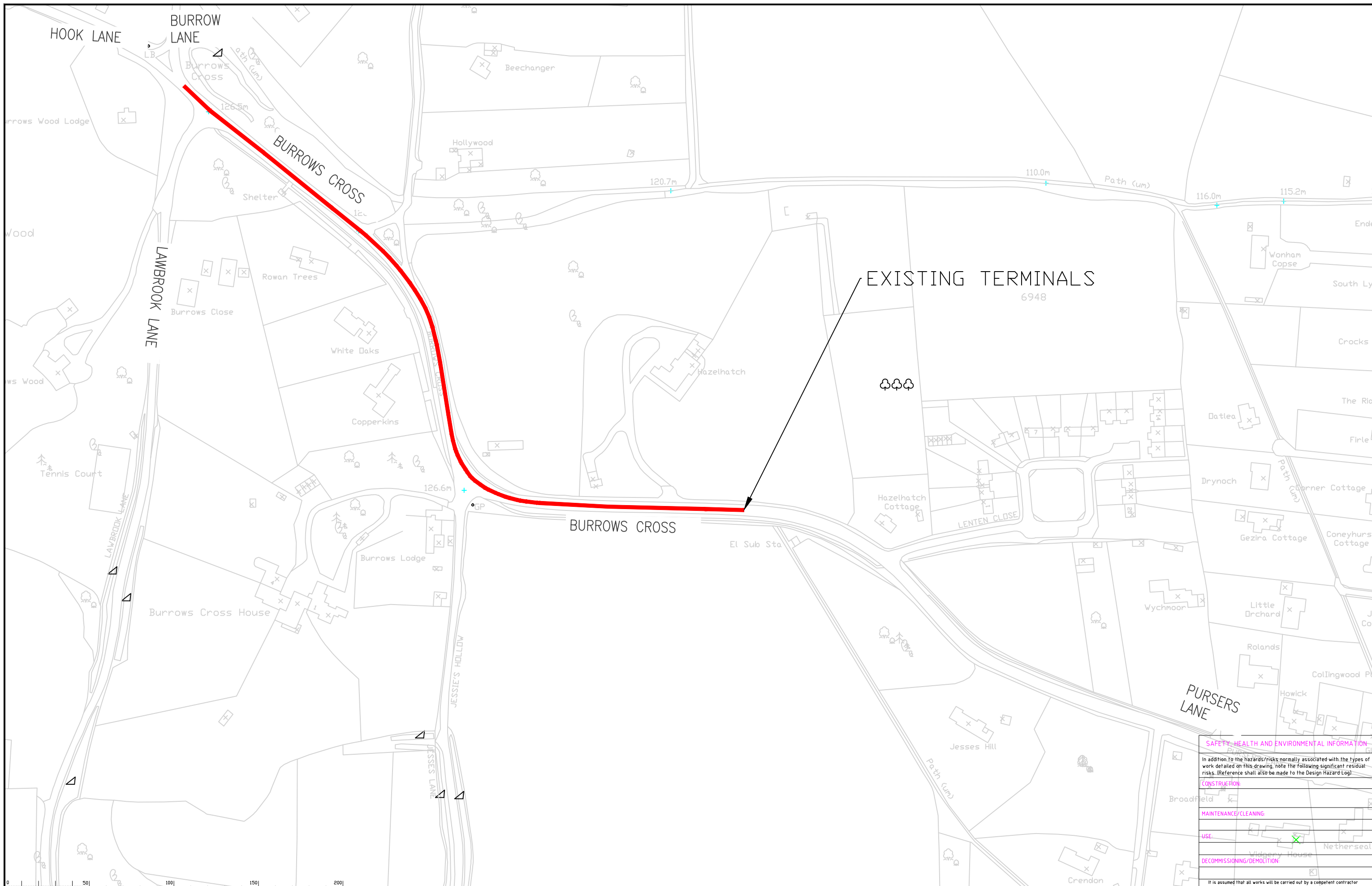
Project No. PC1180

Contract Sheet No.

Drawing No. 109

Rev. -

Classification PRESENTATION



Notes

█ PROPOSED REDUCTION FROM 60mph SPEED LIMIT TO 30mph

Rev.	Description	Drwn	Sig.	Date	Chkd	Sig.	Date	Appr	Sig.	Date
1										

North Point

Based upon the Ordnance Survey mapping with permission of the Controller of Her Majesty's Stationery Office. © Crown copyright. Unauthorised reproduction infringes Crown copyright and may lead to prosecution or civil proceedings. Surrey County Council LA 076872 2002.

Drawn by	DG	Date	APR 2022
Checked by		Date	
Approved by		Date	

D222 BURROWS CROSS
SHERE

RURAL ROAD SPEED LIMIT REDUCTION
TRO PLAN

SHEET 1 OF 1

SAFETY, HEALTH AND ENVIRONMENTAL INFORMATION

In addition to the hazards/risks normally associated with the types of work detailed on this drawing, note the following significant residual risks. (Reference shall also be made to the Design Hazard Log)

CONSTRUCTION

MAINTENANCE/CLEANING

USE

DECOMMISSIONING/DEMOLITION

If it is assumed that all works will be carried out by a competent contractor working, where appropriate, to an approved method statement.

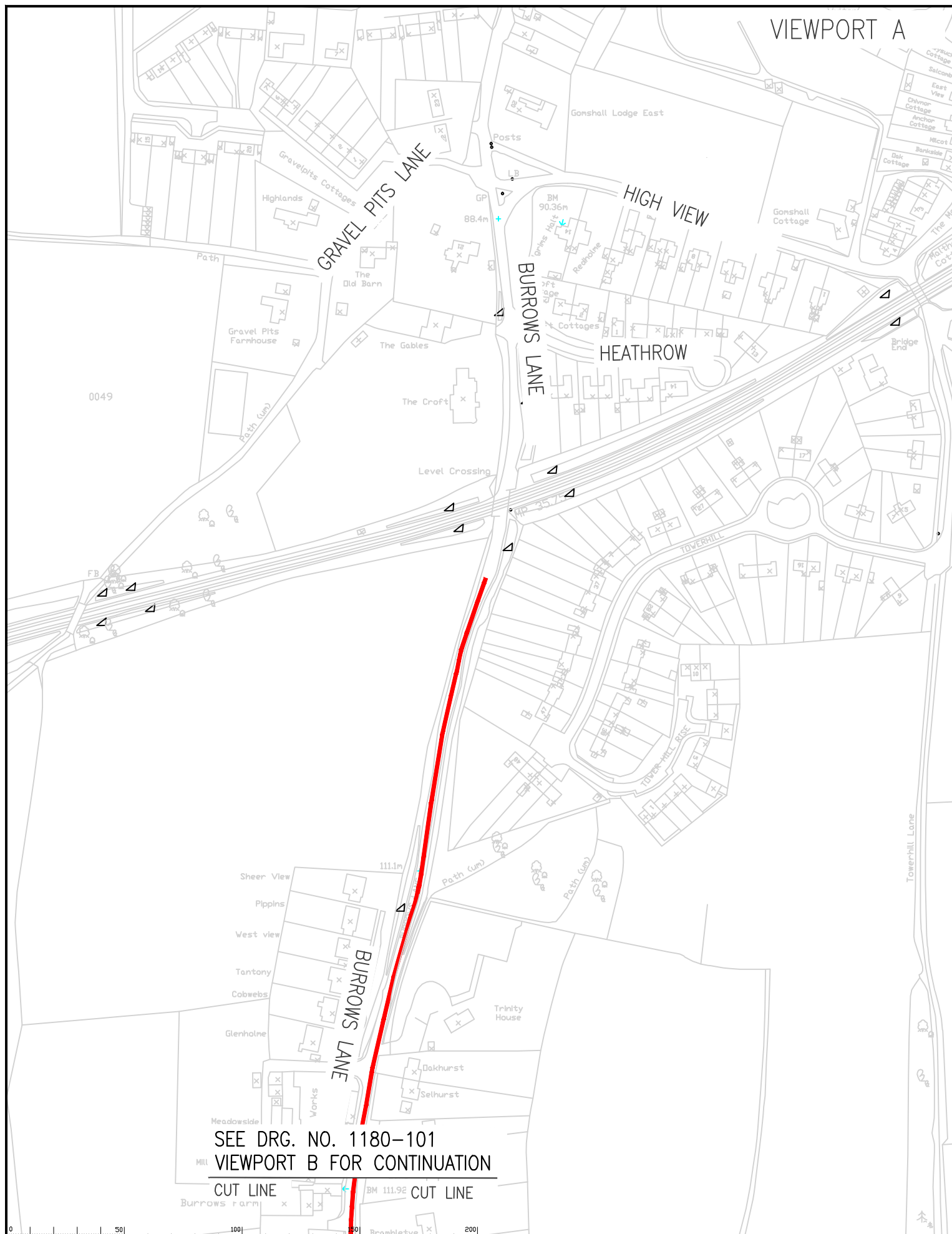
Project No. PC1180

Contract Sheet No. 102

Rev. A

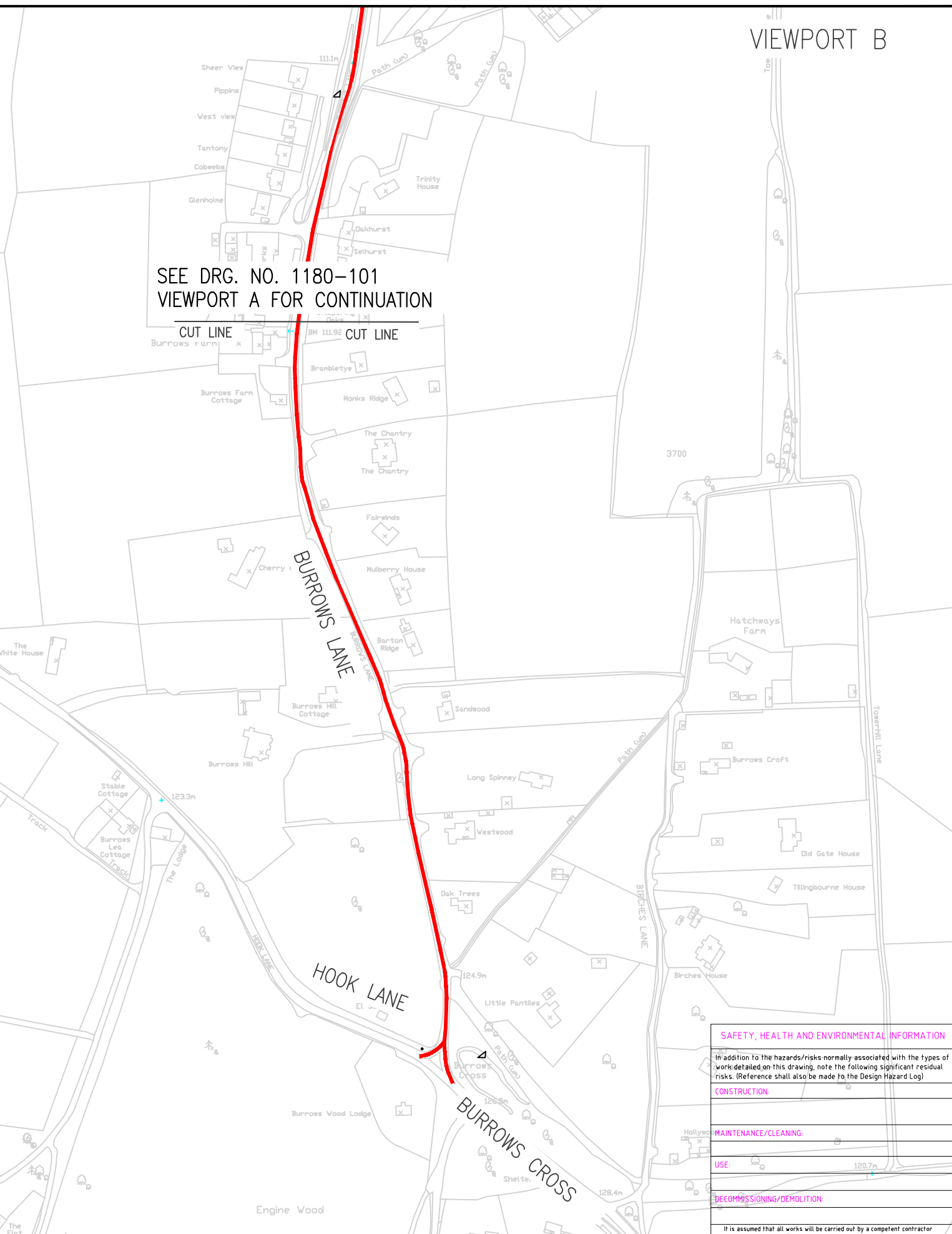
Classification PRESENTATION

SURREY COUNTY COUNCIL
Surrey's Highway Transport for Surrey



SEE DRG. NO. 1180-101
VIEWPORT B FOR CONTINUATION

CUT LINE BM 111.92 CUT LINE



SEE DRG. NO. 1180-101
VIEWPORT A FOR CONTINUATION

CUT LINE BM 111.92 CUT LINE

SAFETY, HEALTH AND ENVIRONMENTAL INFORMATION

In addition to the hazards/risks normally associated with the types of work detailed on this drawing, note the following significant residual risks. (Reference shall also be made to the Design Hazard Log)

CONSTRUCTION
MAINTENANCE/CLEANING
USE
DECOMMISSIONING/DEMOLITION

If it is assumed that all works will be carried out by a competent contractor working, where appropriate, to an approved method statement.

Notes
 PROPOSED REDUCTION FROM 60mph SPEED LIMIT TO 30mph

Rev.	Description	Drwn	Sig.	Date	Chkd	Sig.	Date	Appr	Sig.	Date

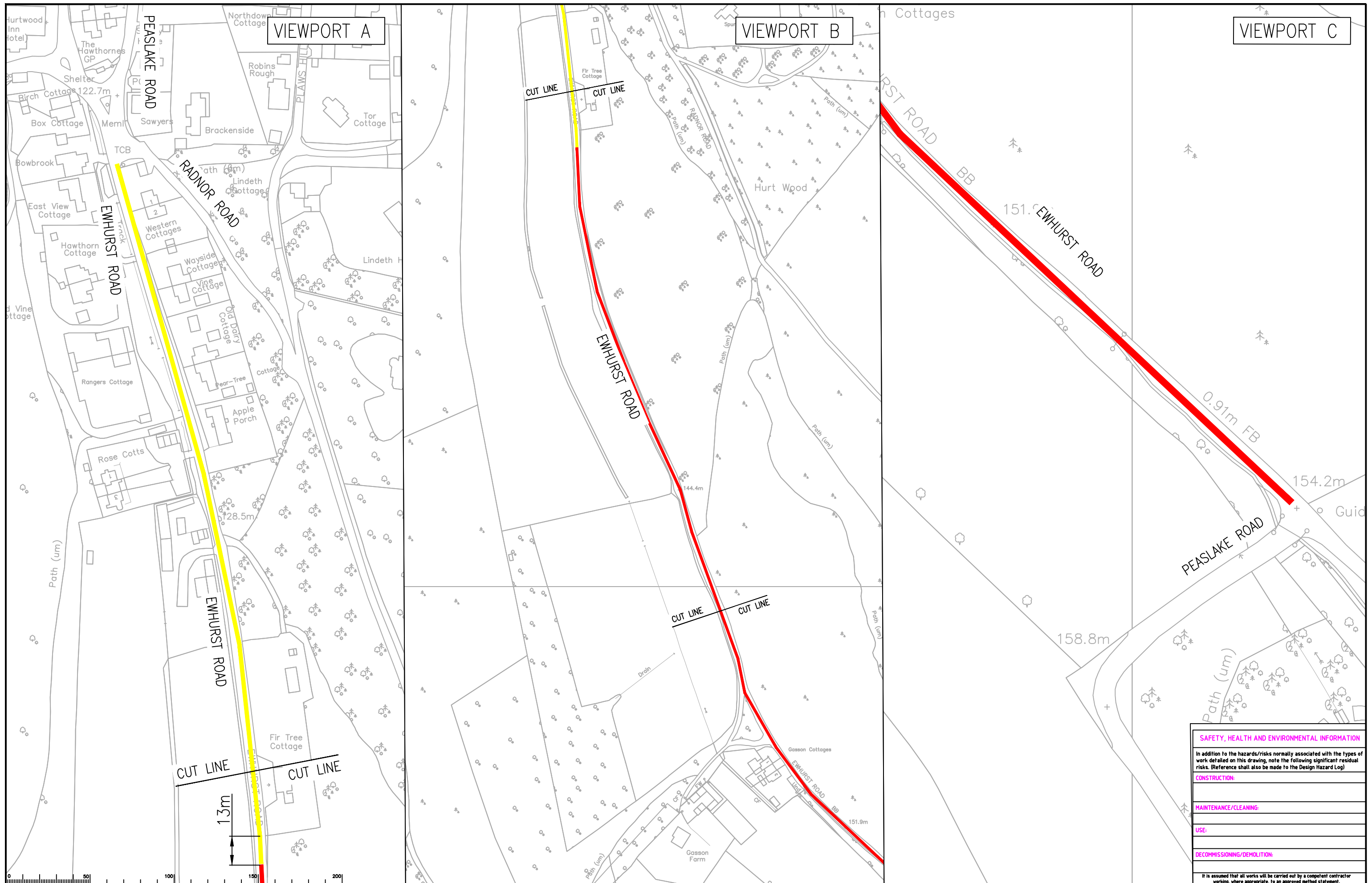
Drawn by	DG	Date	APR 2022
Checked by		Date	
Approved by		Date	

Project No. PC1180
 Contract Sheet No. 101
 Drawing No. 101
 Classification PRESENTATION

SURREY COUNTY COUNCIL
 Surrey Highways
 Transport for Surrey

D227 BURROWS LANE
 SHERE
 RURAL ROAD SPEED LIMIT REDUCTION
 TRO PLAN

SHEET 1 OF 1



Notes

█ PROPOSED REDUCTION FROM 30mph SPEED LIMIT TO 20mph

█ PROPOSED REDUCTION FROM 60mph SPEED LIMIT TO 30mph

Rev.	Description	Drwn	Sig.	Date	Chkd	Sig.	Date	Appr	Sig.	Date
A	PROPOSED SPEED LIMITS AMENDED	KG	KG	23.09.22						
B	PROPOSED SPEED LIMITS AMENDED	PG	PG	17.11.22						

North Point

Based upon the Ordnance Survey mapping with the permission of the Controller of Her Majesty's Stationery Office © Crown copyright. Unauthorised reproduction infringes Crown copyright and may lead to prosecution or civil proceedings. Surrey County Council LA 076872 2002.

Drawn by: DG, Sig. DG, Date: MAY 22

Checked by: DG, Sig. DG, Date:

Approved by: DG, Sig. DG, Date:

Project: D222 EWHURST ROAD PEASHURST

RURAL ROAD SPEED LIMIT REDUCTION SCHEME

TRO PLAN

SHEET 1 OF 1

SUREY COUNTY COUNCIL

Project No. PC1180

Contract Sheet No. 103

Rev. B

Classification PRESENTATION

SAFETY, HEALTH AND ENVIRONMENTAL INFORMATION

In addition to the hazards/risks normally associated with the types of work detailed on this drawing, note the following significant residual risks. (Reference shall also be made to the Design Hazard Log)

CONSTRUCTION:
MAINTENANCE/CLEANING:
USE:
DECOMMISSIONING/DEMOLITION:

If it is assumed that all works will be carried out by a competent contractor working, where appropriate, to an approved method statement.



Notes

PROPOSED REDUCTION FROM 60mph SPEED LIMIT TO 20mph

Rev.	Description	Drwn	Sig.	Date	Chkd	Sig.	Date	Aprr	Sig.	Date
A	PROPOSED SPEED LIMITS AMENDED	KG	KG	21.09.22						

North Point

Based upon the Ordnance Survey mapping with the permission of the Controller of Her Majesty's Stationery Office © Crown copyright. Unauthorised reproduction infringes Crown copyright and may lead to prosecution or civil proceedings. © Surrey County Council LA 078872 2002.

Drawn by	DG	Sig.	DG	Date	MAY 22
Checked by	originator	Sig.		Date	
Approved by		Sig.		Date	

Project
D230 FRANKSFIELD PEASLAKE
 RURAL SPEED LIMITS REDUCTION SCHEME
 TRO PLAN

SHEET 1 OF 1

SAFETY, HEALTH AND ENVIRONMENTAL INFORMATION

In addition to the hazards/risks normally associated with the types of work detailed on this drawing, note the following significant residual risks. (Reference shall also be made to the Design Hazard Log)

CONSTRUCTION:

MAINTENANCE/CLEANING:

USE:

DECOMMISSIONING/DEMOLITION:

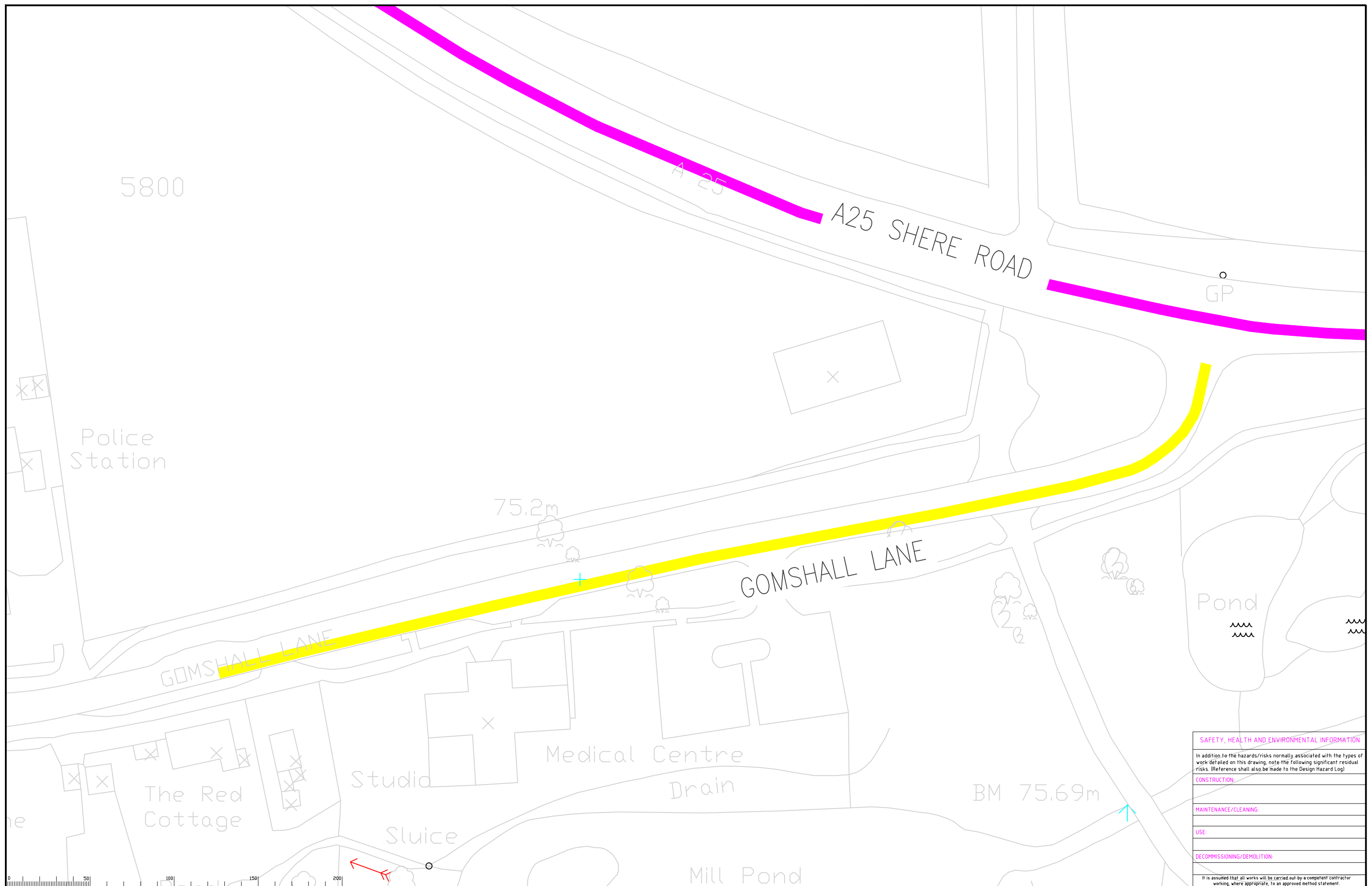
It is assumed that all works will be carried out by a competent contractor working, where appropriate, to an approved method statement.

Project No.
PC1180

Contract Sheet No.
 Drawing No.
111

Rev.
A

Classification
PRESENTATION



SAFETY, HEALTH AND ENVIRONMENTAL INFORMATION	
In addition to the hazards/risks normally associated with the types of work detailed on this drawing, note the following significant residual risks. (Reference shall also be made to the Design Hazard Log)	
CONSTRUCTION:	
MAINTENANCE/CLEANING:	
USE:	
DECOMMISSIONING/DEMOLITION:	
It is assumed that all works will be carried out by a competent contractor working, where appropriate, to an approved method statement.	

Notes

PROPOSED REDUCTION FROM 60mph SPEED LIMIT TO 20mph

Rev.	Description	Drwn	Sig.	Date	Chkd	Sig.	Date	Appr	Sig.	Date

North Point

Based upon the Ordnance Survey mapping with permission of the Controller of Her Majesty's Stationery Office © Crown copyright. Unauthorised reproduction infringes Crown copyright and may lead to prosecution or civil proceedings. Surrey County Council LA 07687E 2005.

Drawn by DG Date APR 2022

Checked by originator Date

Approved by Date

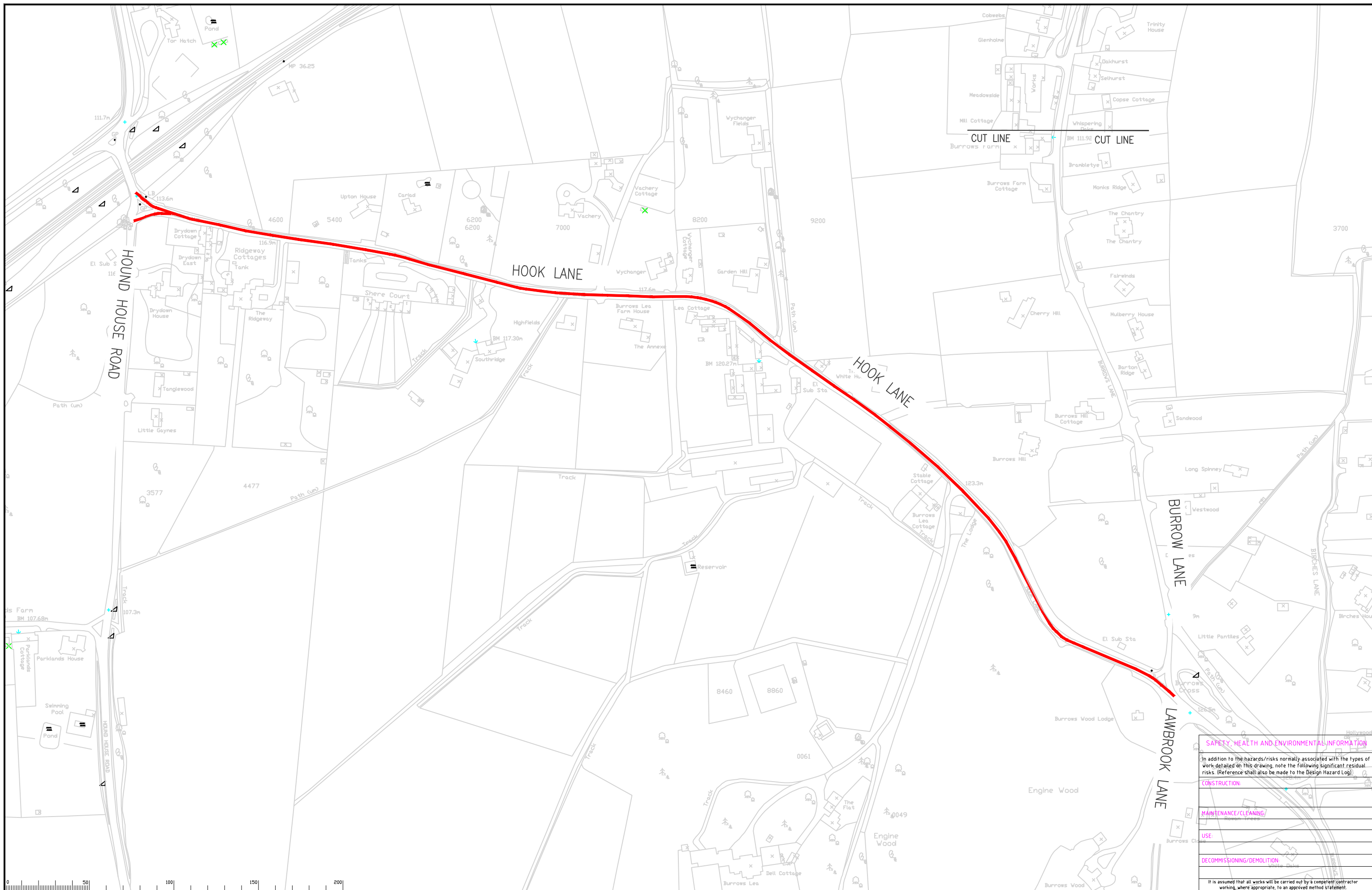
Project No. C43 GOMSHALL LANE SHERE

RURAL ROAD SPEED LIMIT REDUCTION TRO PLAN

SHEET 1 OF 1

SURREY COUNTY COUNCIL
Surrey Highway Transport for Surrey

Project No. PC1180	Contract Sheet No. 077	Rev. -
Classification PRESENTATION		



Notes
 PROPOSED REDUCTION FROM 60mph SPEED LIMIT TO 30mph

Rev.	Description	Drwn	Sig.	Date	Chkd	Sig.	Date	Appr	Sig.	Date

North Point	Project
	Based upon the Ordnance Survey mapping with permission of the Controller of Her Majesty's Stationery Office. © Crown copyright. Unauthorised reproduction infringes Crown copyright and may lead to prosecution or civil proceedings. Surrey County Council LA 076872 2002.
Drawn by	DG
Checked by	
Approved by	
Date	APR 2022
Date	
Date	

HOOK LANE

RURAL ROAD SPEED LIMIT REDUCTION

TRO PLAN

Project No.
PC1180

Contract Sheet No.
079

Rev.
-

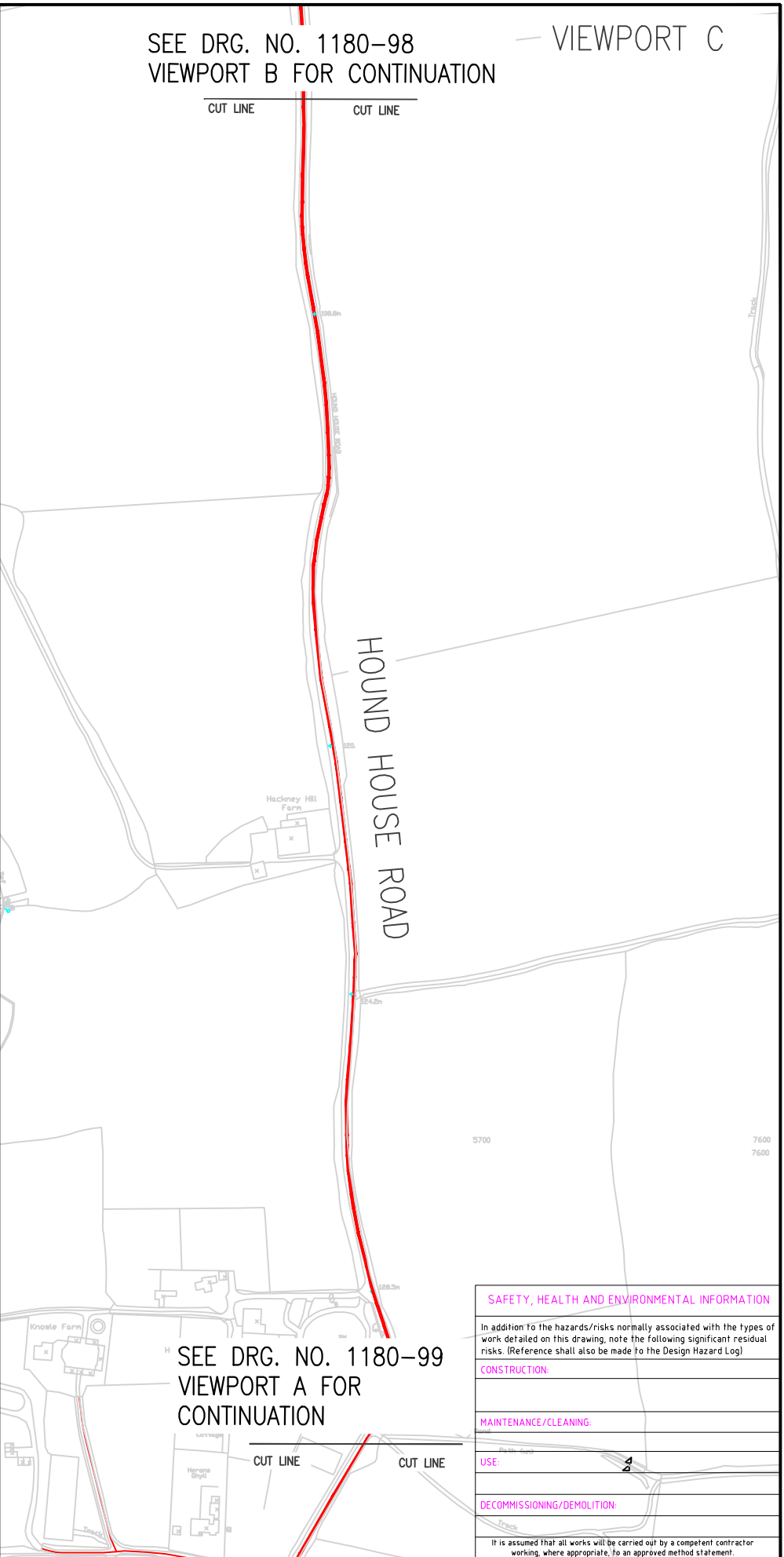
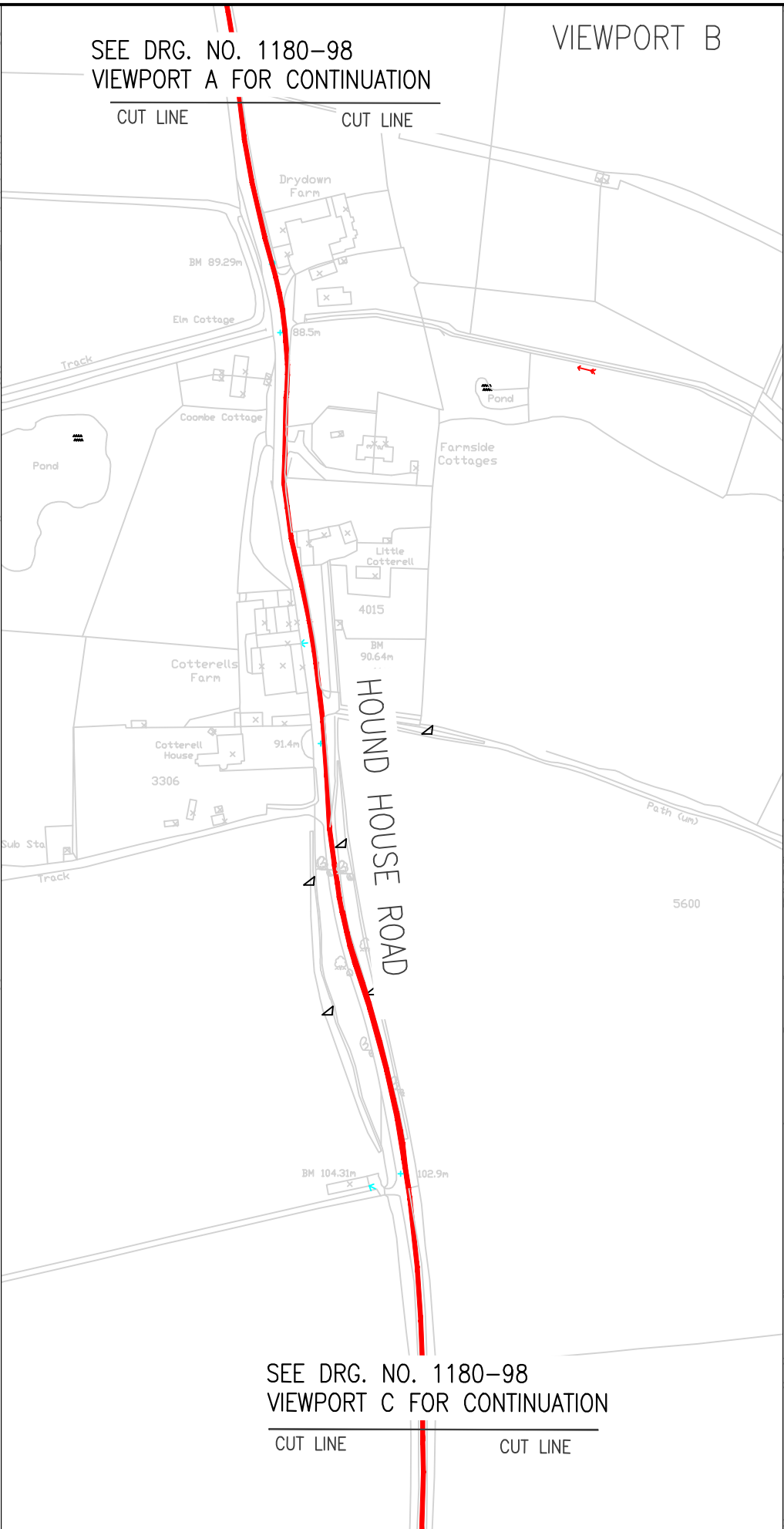
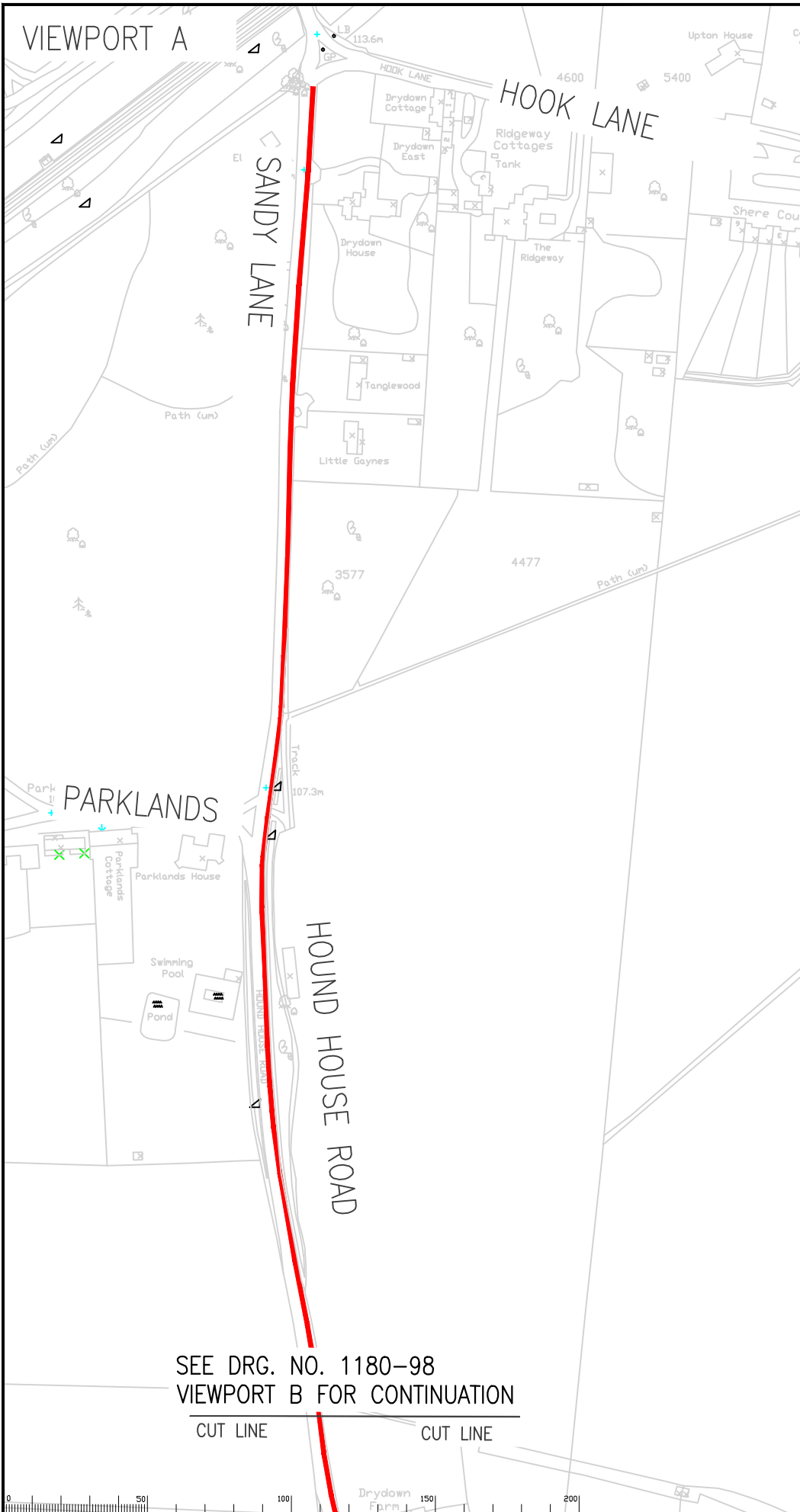
Classification
PRESENTATION

SURREY COUNTY COUNCIL
Surrey's Highway Transport for Surrey

It is assumed that all works will be carried out by a competent contractor working, where appropriate, to an approved method statement.

SHEET 1 OF 1

SAFETY, HEALTH AND ENVIRONMENTAL INFORMATION	
In addition to the hazards/risks normally associated with the types of work detailed on this drawing, note the following significant residual risks. (Reference shall also be made to the Design Hazard Log)	
CONSTRUCTION	
MAINTENANCE/CLEANING	
USE	
DECOMMISSIONING/DEMOLITION	



SAFETY, HEALTH AND ENVIRONMENTAL INFORMATION	
In addition to the hazards/risks normally associated with the types of work detailed on this drawing, note the following significant residual risks. (Reference shall also be made to the Design Hazard Log)	
CONSTRUCTION	
MAINTENANCE/CLEANING	
USE	
DECOMMISSIONING/DEMOLITION	
It is assumed that all works will be carried out by a competent contractor working, where appropriate, to an approved method statement.	

Notes

PROPOSED REDUCTION FROM 60mph SPEED LIMIT TO 30mph

Rev.	Description	Drwn	Sig.	Date	Chkd	Sig.	Date	Appr	Sig.	Date

North Point

Based upon the Ordnance Survey mapping with permission of the Controller of Her Majesty's Stationery Office © Crown copyright. Unauthorised reproduction infringes Crown copyright and may lead to prosecution or civil proceedings. Surrey County Council LA 076872 2002.

Drawn by DG Date APR 2022

Checked by originator Date

Approved by Date

C46 HOUND HOUSE ROAD
SHERE

RURAL ROAD SPEED LIMIT REDUCTION
TRO PLAN

Project No. PC1180
Contract Sheet No. 098
Drawing No. 098 Rev. -
Classification PRESENTATION

SURREY COUNTY COUNCIL
Surrey Highway Transport for Surrey

SHEET 1 OF 2

VIEWPORT A

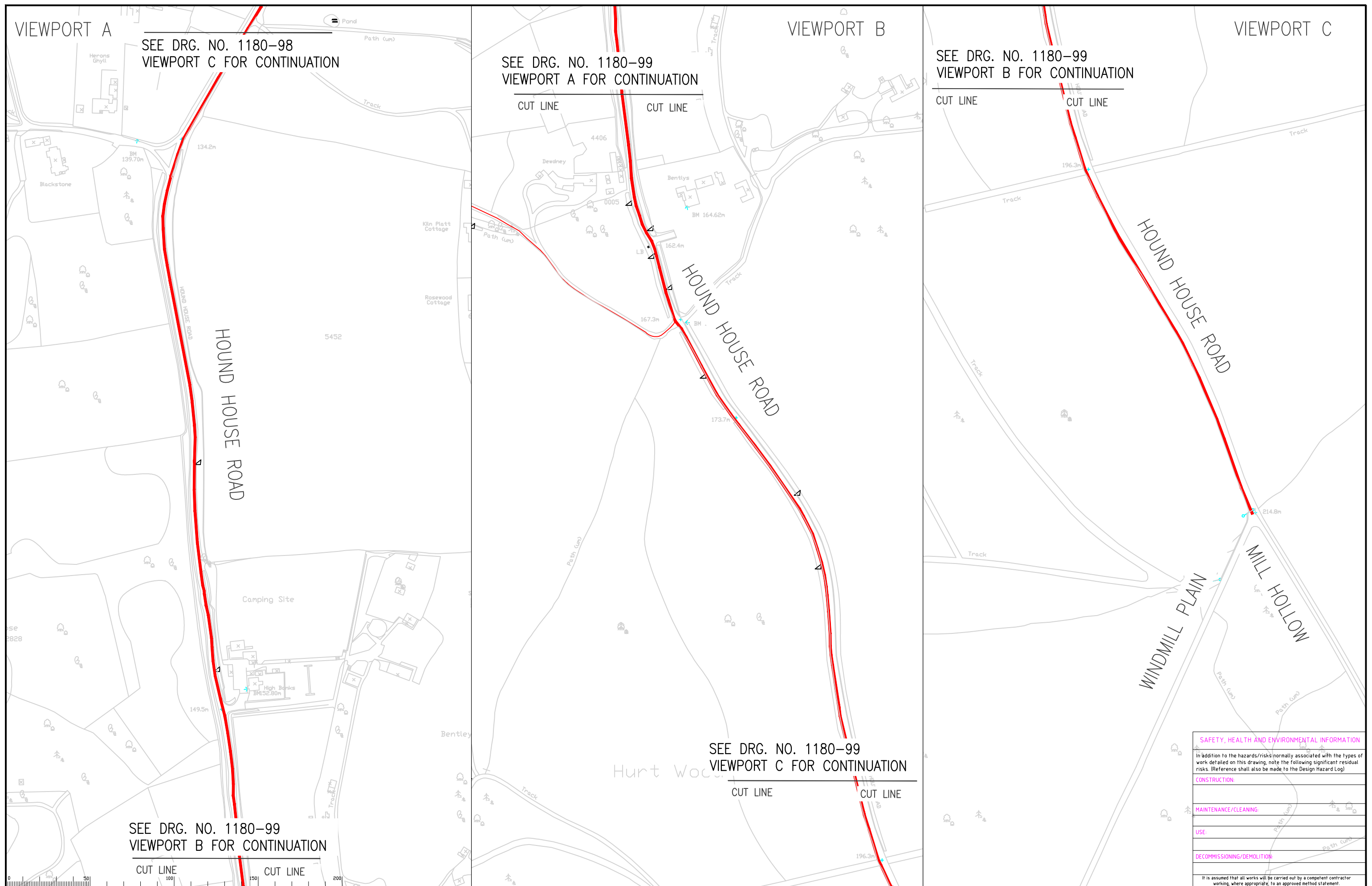
SEE DRG. NO. 1180-98
VIEWPORT C FOR CONTINUATION

VIEWPORT B

SEE DRG. NO. 1180-99
VIEWPORT A FOR CONTINUATION

VIEWPORT C

SEE DRG. NO. 1180-99
VIEWPORT B FOR CONTINUATION



SEE DRG. NO. 1180-99
VIEWPORT B FOR CONTINUATION

SEE DRG. NO. 1180-99
VIEWPORT C FOR CONTINUATION

CUT LINE CUT LINE

CUT LINE CUT LINE

Notes
 PROPOSED REDUCTION FROM 60mph SPEED LIMIT TO 30mph

Rev.	Description	Drwn	Sig.	Date	Chkd	Sig.	Date	Appr	Sig.	Date

Drawn by	DG	Date	APR 2022
Checked by		Date	
Approved by		Date	

Project
C46 HOUND HOUSE ROAD
 SHERE
 RURAL ROAD SPEED LIMIT REDUCTION
 TRO PLAN

SAFETY, HEALTH AND ENVIRONMENTAL INFORMATION	
In addition to the hazards/risks normally associated with the types of work detailed on this drawing, note the following significant residual risks. (Reference shall also be made to the Design Hazard Log)	
CONSTRUCTION	
MAINTENANCE/CLEANING	
USE	
DECOMMISSIONING/DEMOLITION	
It is assumed that all works will be carried out by a competent contractor working, where appropriate, to an approved method statement.	

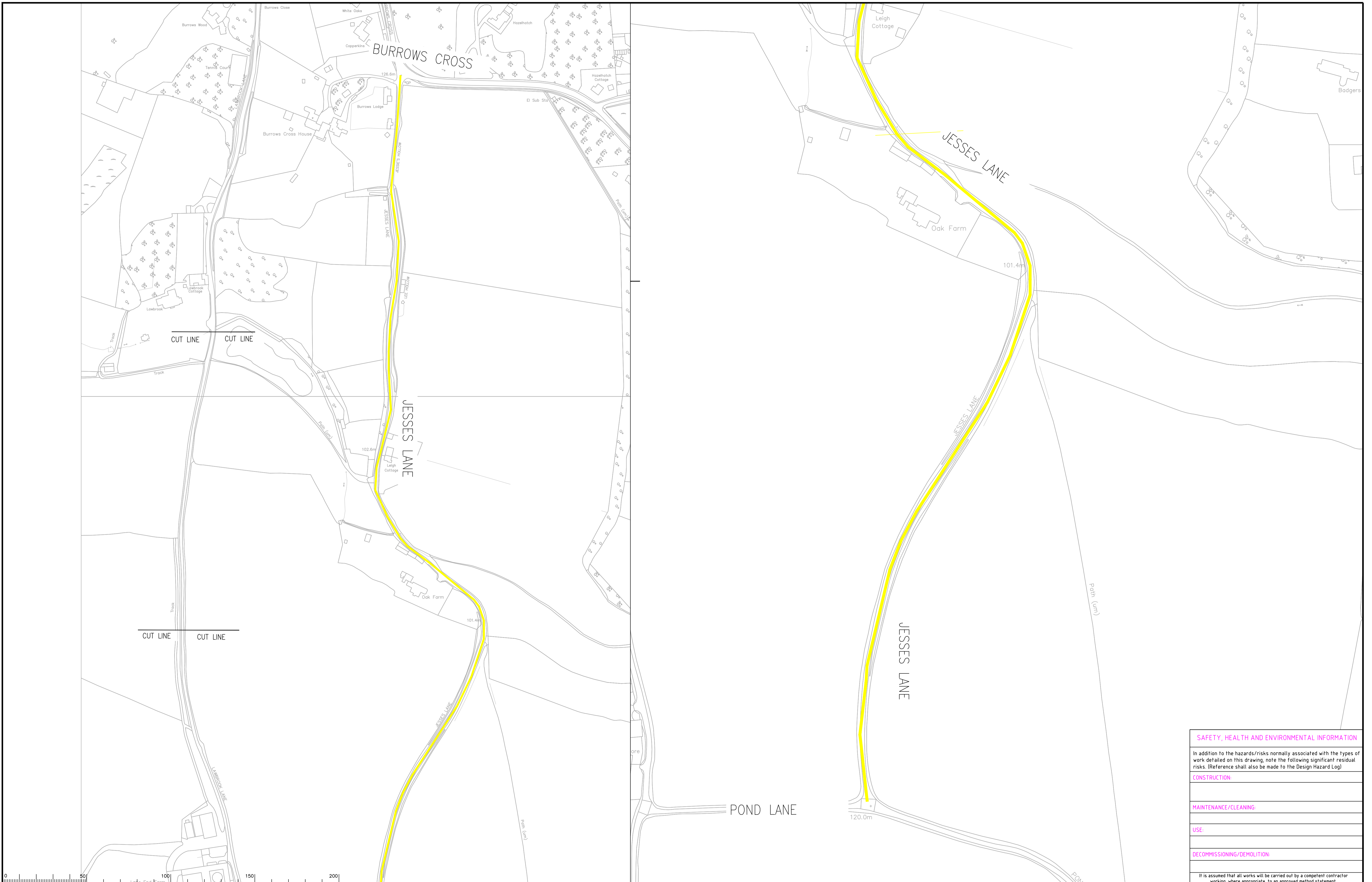
Project No. **PC1180**

Contract Sheet No. **099**

Rev. **-**

Classification **PRESENTATION**

SURREY COUNTY COUNCIL
Surrey Highway Transport for Surrey



SAFETY, HEALTH AND ENVIRONMENTAL INFORMATION	
In addition to the hazards/risks normally associated with the types of work detailed on this drawing, note the following significant residual risks. (Reference shall also be made to the Design Hazard Log)	
CONSTRUCTION:	
MAINTENANCE/CLEANING:	
USE:	
DECOMMISSIONING/DEMOLITION:	
It is assumed that all works will be carried out by a competent contractor working, where appropriate, to an approved method statement.	

Notes

PROPOSED REDUCTION FROM 60mph SPEED LIMIT TO 20mph

Rev.	Description	Drwn	Sig.	Date	Chkd	Sig.	Date	Appr	Sig.	Date

North Point		
<small>*Based upon the Ordnance Survey mapping with the permission of the Controller of Her Majesty's Stationery Office. © Crown copyright. Unauthorised reproduction infringes Crown copyright and may lead to prosecution or civil proceedings. Surrey County Council LA 076872 2002.</small>	Drawn by DG	Date MAY 22
Checked by originator	Sig. DG	Date Date
Approved by	Sig.	Date

Project

D228 JESSE'S LANE
PEASLAKE

Drawing

RURAL SPEED LIMITS REDUCTION SCHEME
TRO PLAN

SHEET 1 OF 1

Project No.

PC1180

Contract Sheet No.

110

Rev.

-

Classification

PRESENTATION

VIEWPORT A

VIEWPORT B

VIEWPORT C

SEE DRG. NO. 1180-107 VIEWPORT A FOR CONTINUATION

SEE DRG. NO. 1180-107 VIEWPORT B FOR CONTINUATION

CUT LINE CUT LINE

CUT LINE CUT LINE

Engine Wood

Burrows Wood Lodge

Burrows Wood

Tennis Court

LAWBROOK LAKE

SEE DRG. NO. 1180-107 VIEWPORT B FOR CONTINUATION

CUT LINE CUT LINE

Track

Track

LAWBROOK LAKE

SEE DRG. NO. 1180-107 VIEWPORT C FOR CONTINUATION

CUT LINE CUT LINE

Track

Lane End Farm

Track

LAWBROOK LAKE

LAWBROOK LAKE

The Cottage

POND LANE

120.0m

SEE DRG. NO. 1180-108 VIEWPORT A FOR CONTINUATION

CUT LINE CUT LINE

SAFETY, HEALTH AND ENVIRONMENTAL INFORMATION

In addition to the hazards/risks normally associated with the types of work detailed on this drawing, note the following significant residual risks. (Reference shall also be made to the Design Hazard Log)

CONSTRUCTION:

MAINTENANCE/CLEANING:

USE:

DECOMMISSIONING/DEMOLITION:

It is assumed that all works will be carried out by a competent contractor working, where appropriate, to an approved method statement.

Notes
PROPOSED REDUCTION FROM 60mph SPEED LIMIT TO 20mph

Rev.	Description	Drwn	Sig.	Date	Chkd	Sig.	Date	Appr	Sig.	Date

North Point		
Drawn by	DG	Date
Checked by	DG	Date
Approved by	DG	Date

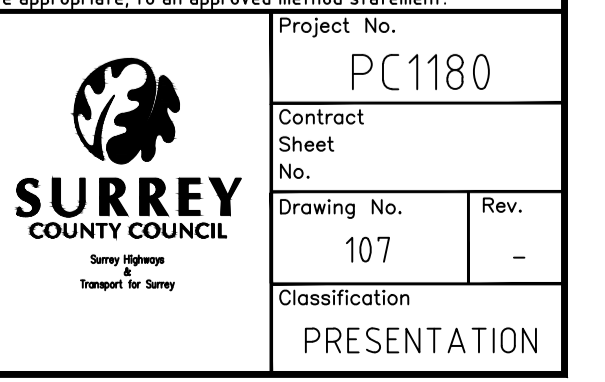
Project: D227 LAWBROOK LANE PEASLAKE

Drawing: RURAL SPEED LIMITS REDUCTION SCHEME TRO PLAN

Project No.: PC1180

Contract Sheet No.: 107

Classification: PRESENTATION



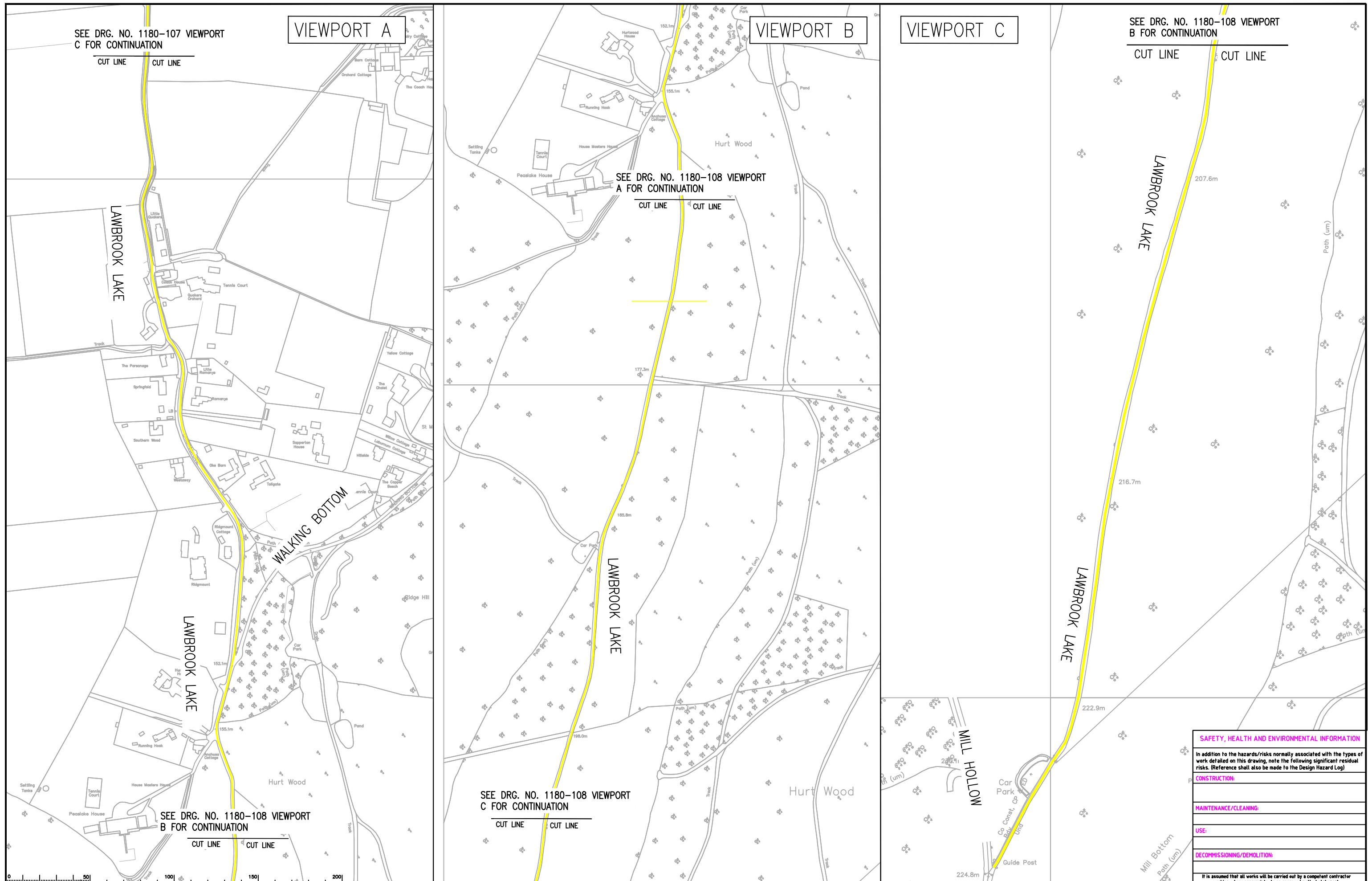
SEE DRG. NO. 1180-107 VIEWPORT C FOR CONTINUATION

VIEWPORT A

VIEWPORT B

VIEWPORT C

SEE DRG. NO. 1180-108 VIEWPORT B FOR CONTINUATION



SEE DRG. NO. 1180-108 VIEWPORT B FOR CONTINUATION

SEE DRG. NO. 1180-108 VIEWPORT C FOR CONTINUATION

Notes
 PROPOSED REDUCTION FROM 60mph SPEED LIMIT TO 20mph

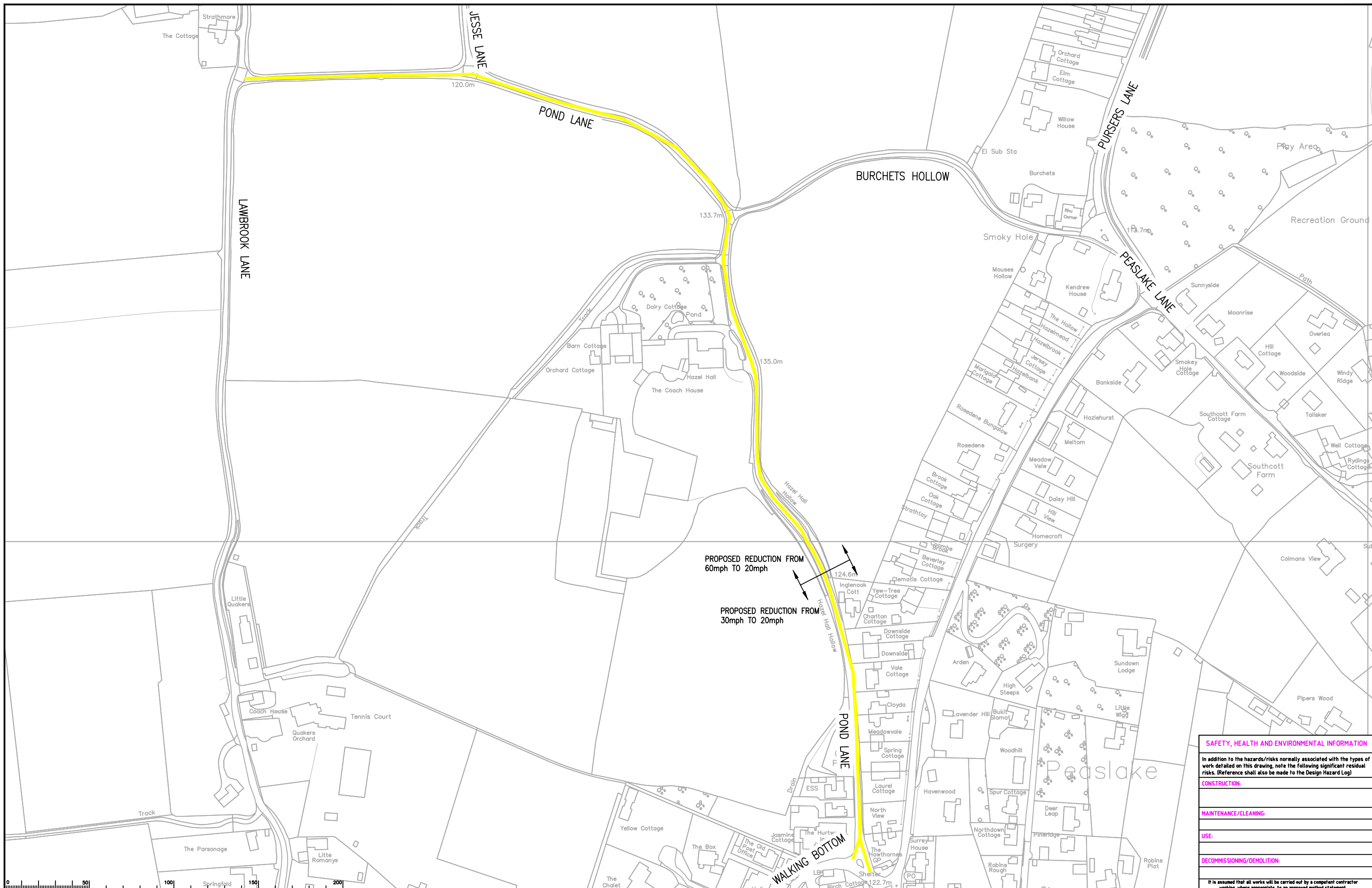
Rev.	Description	Drwn	Sig.	Date	Chkd	Sig.	Date	Appr	Sig.	Date

North Point			
Drawn by	DG	Sig.	Date
Checked by	DG	Sig.	MAY 22
Approved by		Sig.	

Project
 D227 LAWBROOK LANE
 PEASLAKE
 RURAL SPEED LIMIT REDUCTION SCHEME
 TRO PLAN

SURRY COUNTY COUNCIL
 Project No. PC1180
 Contract Sheet No. 108
 Drawing No. 108
 Classification PRESENTATION

SAFETY, HEALTH AND ENVIRONMENTAL INFORMATION	
In addition to the hazards/risks normally associated with the types of work detailed on this drawing, note the following significant residual risks. (Reference shall also be made to the Design Hazard Log)	
CONSTRUCTION:	
MAINTENANCE/CLEANING:	
USE:	
DECOMMISSIONING/DEMOLITION:	
It is assumed that all works will be carried out by a competent contractor working, where appropriate, to an approved method statement.	



SAFETY, HEALTH AND ENVIRONMENTAL INFORMATION

In addition to the hazards/risks normally associated with the types of work detailed on this drawing, note the following significant residual risks. (Reference shall also be made to the Design Hazard Log)

CONSTRUCTION:
MAINTENANCE/CLEANING:
USE:
DECOMMISSIONING/DEMOLITION:
<small>If it is assumed that all works will be carried out by a competent contractor working, where appropriate, to an approved method statement.</small>

Notes

0 50 100 150 200

Springfield

■ PROPOSED REDUCTION TO 20mph

Rev.	Description	Drwn	Sig.	Date	Chkd	Sig.	Date	Apr	Sig.	Date
A	PROPOSED SPEED LIMITS AMENDED	KG	KG	23.09.22						

North Point	Project	Contract Sheet No.	Rev.
<p>Based upon the Ordnance Survey mapping with the permission of the Controller of Her Majesty's Stationery Office © Crown copyright. Unauthorised reproduction infringes Crown copyright and may lead to prosecution or civil proceedings. Surrey County Council LA 076872 2022.</p> <p>Drawn by DG DG Date MAY 22</p> <p>Checked by originator Sig. DG Date</p> <p>Approved by Sig. Date</p>	D226 POND LANE PEASLAKE	106	A

RURAL SPEED LIMITS REDUCTION SCHEME

TRO PLAM

Project No. **PC1180**

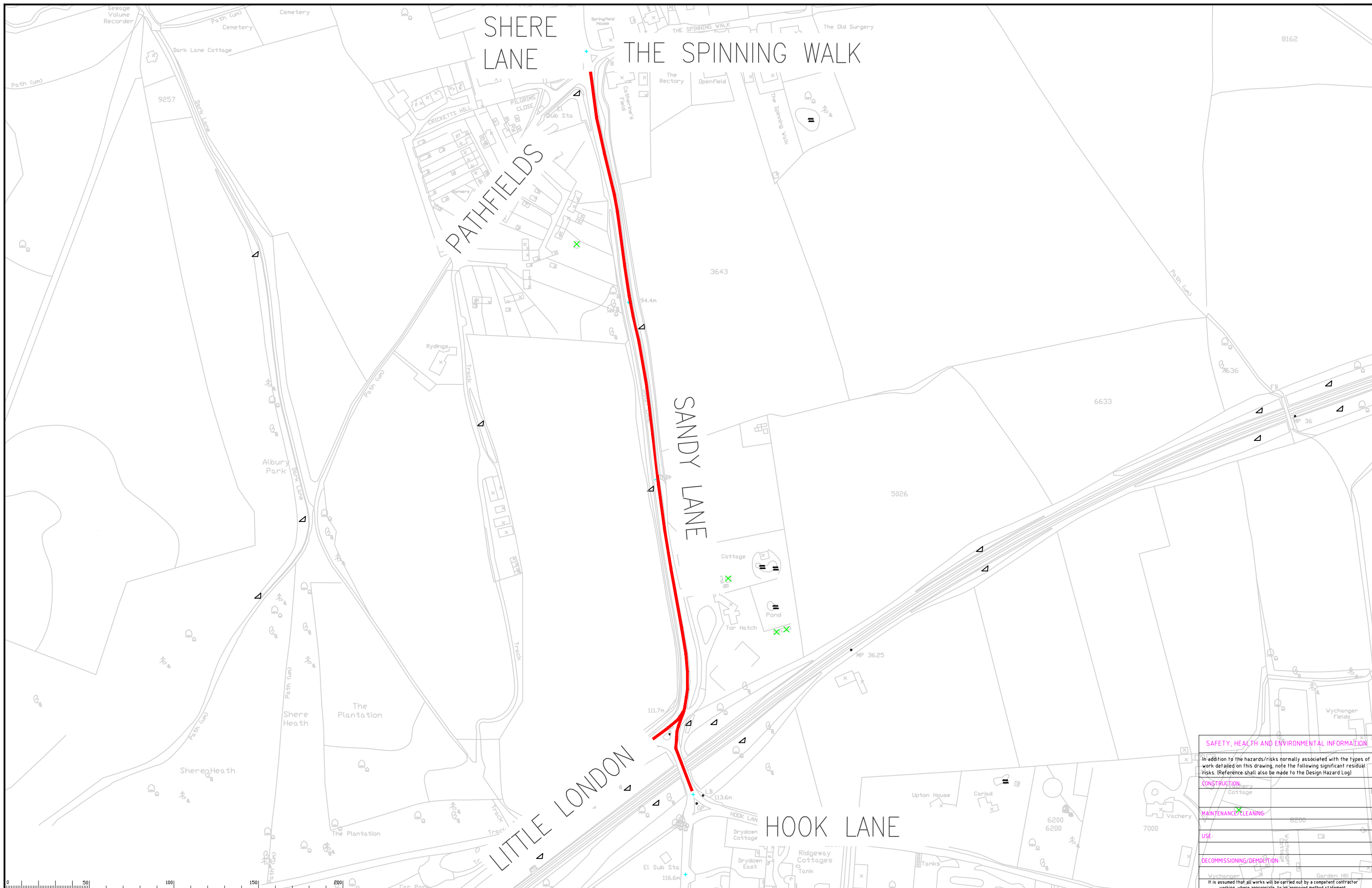
Contract Sheet No. **106**

Rev. **A**

Classification **PRESENTATION**

SHEET 1 OF 1





SAFETY, HEALTH AND ENVIRONMENTAL INFORMATION

In addition to the hazards/risks normally associated with the types of work detailed on this drawing, note the following significant residual risks. (Reference shall also be made to the Design Hazard Log)

CONSTRUCTION	
MAINTENANCE/CLEANING	
USE	
DECOMMISSIONING/DEMOLITION	

It is assumed that all works will be carried out by a competent contractor working, where appropriate, to an approved method statement.

Notes
 PROPOSED REDUCTION FROM 60mph SPEED LIMIT TO 30mph

Rev.	Description	Drwn	Sig.	Date	Chkd	Sig.	Date	Appr	Sig.	Date

Drawn by	DG	Date	APR 2022
Checked by		Date	
Approved by		Date	

C46 SANDY LANE
SHERE

RURAL ROAD SPEED LIMIT REDUCTION
TRO PLAN

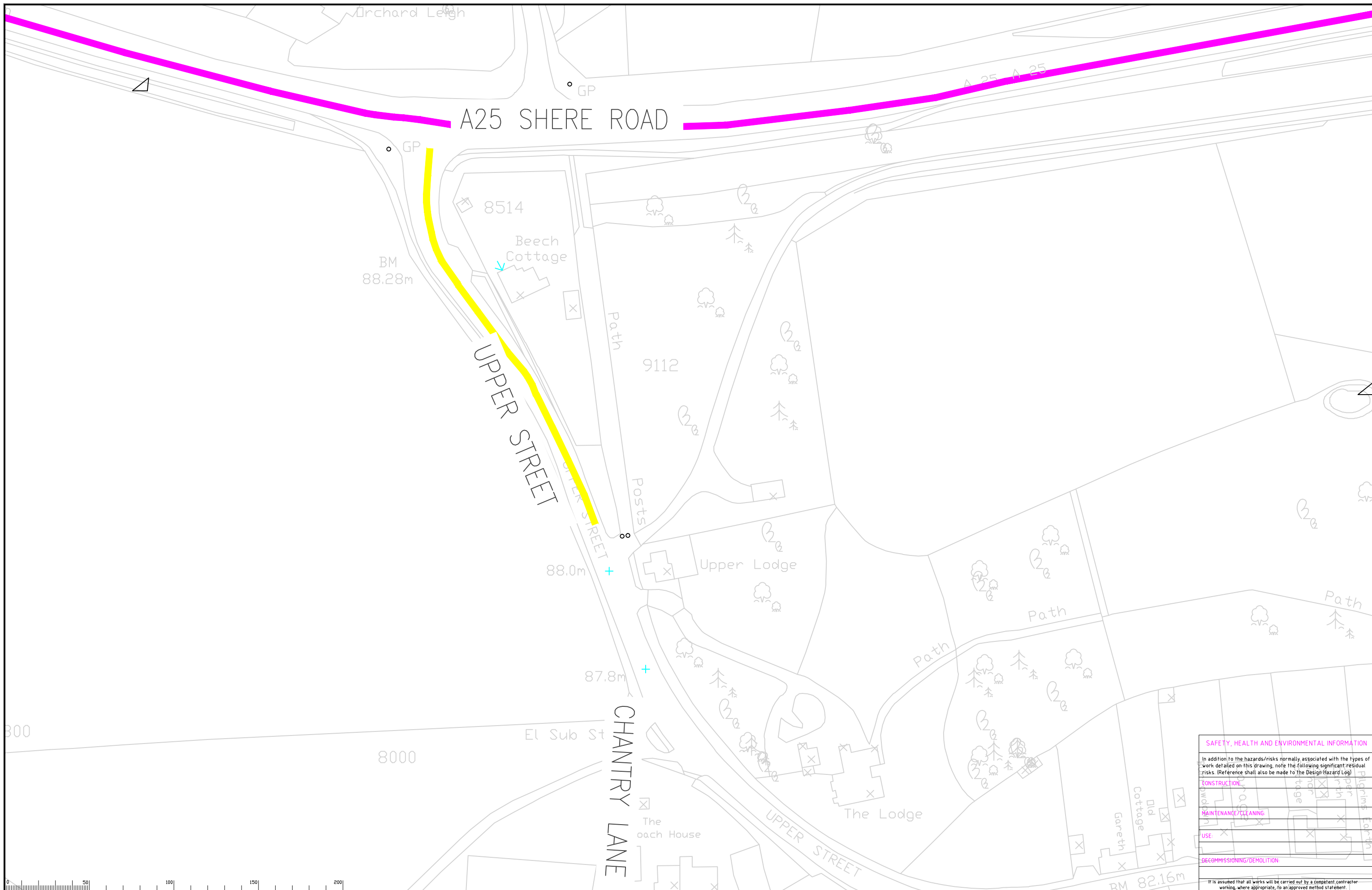
Project No.
PC1180

Contract Sheet No.
100

Rev.
-

Classification
PRESENTATION

SHEET 1 OF 1



Notes

PROPOSED REDUCTION FROM 60mph SPEED LIMIT TO 20mph

Rev.	Description	Drwn	Sig.	Date	Chkd	Sig.	Date	Appr	Sig.	Date

North Point

Based upon the Ordnance Survey mapping with permission of the Controller of Her Majesty's Stationery Office. © Crown copyright. Unauthorised reproduction infringes Crown copyright and may lead to prosecution or civil proceedings. Surrey County Council LA 076872 2002.

Drawn by	DG	Sig.	Date
Checked by		Sig.	Date
Approved by		Sig.	Date

Project No. PC1180

Contract Sheet No. 078

Revision No. -

Classification PRESENTATION

SHEET 1 OF 1

SAFETY, HEALTH AND ENVIRONMENTAL INFORMATION

In addition to the hazards/risks normally associated with the types of work detailed on this drawing, note the following significant residual risks. (Reference shall also be made to the Design Hazard Log)

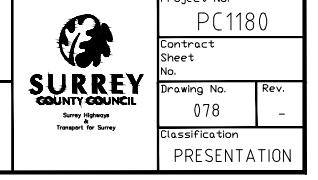
CONSTRUCTION

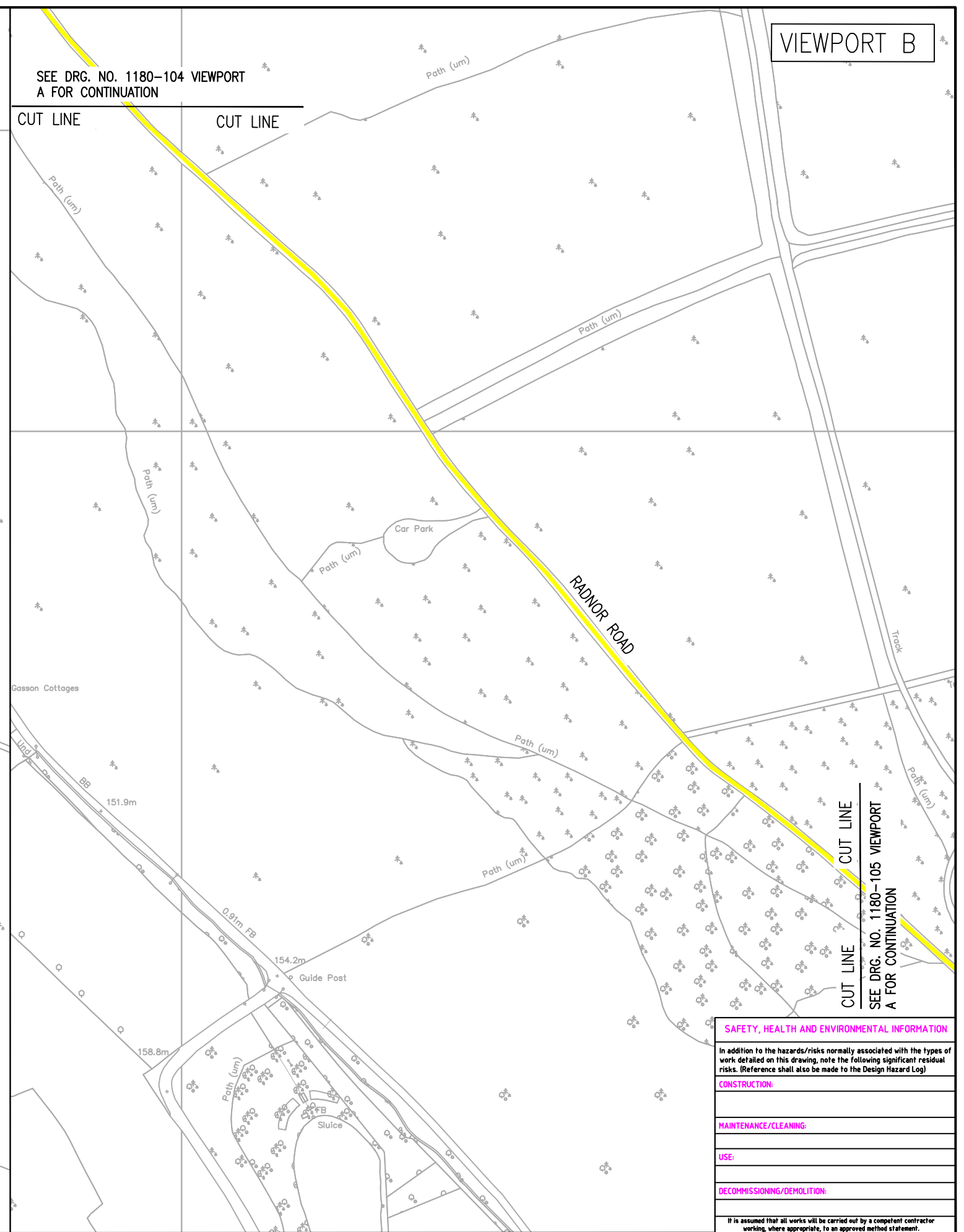
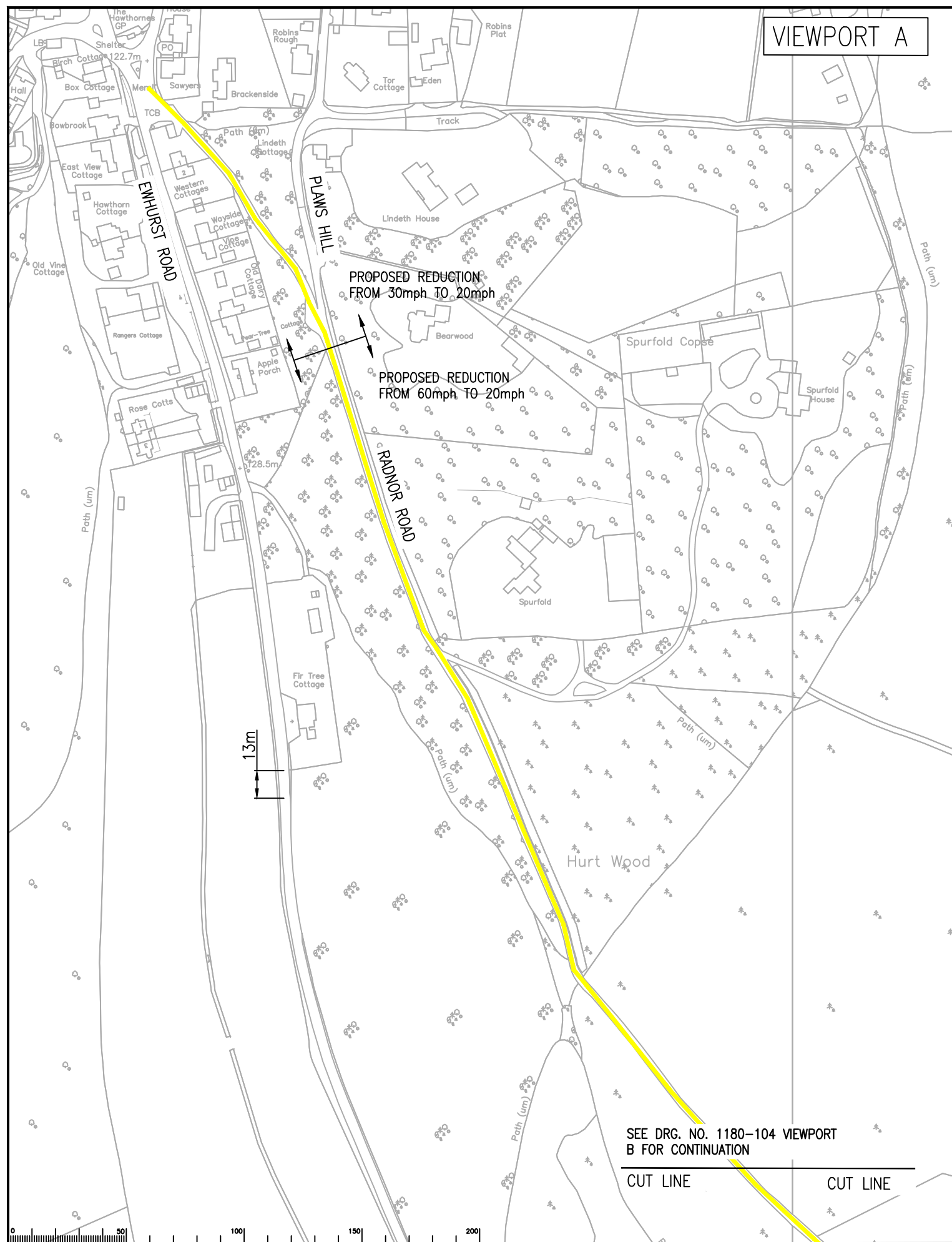
MAINTENANCE/CLEANING

USE

DECOMMISSIONING/DEMOLITION

It is assumed that all works will be carried out by a competent contractor working, where appropriate, to an approved method statement.





Notes

PROPOSED REDUCTION FROM 60mph SPEED LIMIT TO 20mph

Rev.	Description	Drwn	Sig.	Date	Chkd	Sig.	Date	Apr	Sig.	Date

North Point

Based upon the Ordnance Survey mapping with the permission of the Controller of Her Majesty's Stationery Office © Crown copyright. Unauthorised reproduction infringes Crown copyright and may lead to prosecution or civil proceedings. Surrey County Council LA 076872 2022.

Drawn by	DG	Sig.	DG	Date	MAY 22
Checked by		Sig.		Date	
Approved by		Sig.		Date	

Project

D276 RADNOR ROAD
PEASLAKE

RURAL SPEED LIMIT REDUCTION SCHEME
TRO PLAN

SHEET 1 OF 2

SUREY COUNTY COUNCIL

Project No. PC1180

Contract Sheet No. 104

Rev. -

Classification PRESENTATION

SAFETY, HEALTH AND ENVIRONMENTAL INFORMATION

In addition to the hazards/risks normally associated with the types of work detailed on this drawing, note the following significant residual risks. (Reference shall also be made to the Design Hazard Log)

CONSTRUCTION:

MAINTENANCE/CLEANING:

USE:

DECOMMISSIONING/DEMOLITION:

If it is assumed that all works will be carried out by a competent contractor working, where appropriate, to an approved method statement.

VIEWPORT A

VIEWPORT B

SEE DRG. NO. 1180-104 VIEWPORT B FOR CONTINUATION

SEE DRG. NO. 1180-105 VIEWPORT A FOR CONTINUATION

SEE DRG. NO. 1180-105 VIEWPORT B FOR CONTINUATION



Notes
 PROPOSED REDUCTION FROM 60mph SPEED LIMIT TO 20mph

SAFETY, HEALTH AND ENVIRONMENTAL INFORMATION	
In addition to the hazards/risks normally associated with the types of work detailed on this drawing, note the following significant residual risks. (Reference shall also be made to the Design Hazard Log)	
CONSTRUCTION:	
MAINTENANCE/CLEANING:	
USE:	
DECOMMISSIONING/DEMOLITION:	
It is assumed that all works will be carried out by a competent contractor working, where appropriate, to an approved method statement.	

Rev.	Description	Drwn	Sig.	Date	Chkd	Sig.	Date	Aprr	Sig.	Date

North Point		
Drawn by	DG	Date
Checked by	DG	Date
Approved by		Date

Project
D276 RADNOR ROAD & RADNOR LANE
 PEASLAKE
 RURAL ROADS SPEED LIMIT REDUCTION SCHEME
 TRO PLAN

Project No. **PC1180**

Contract Sheet No. **105**

Rev. **-**

Classification **PRESENTATION**

SURREY COUNTY COUNCIL
 Council of the County of Surrey

SHEET 2 OF 2