

Drawing Notes PC1176/General Arrangement

- All dimensions are given in metres and levels in metres Above Ordnance Datum (mAOD)
- This drawing is for general arrangement purposes only and is not to be used for the execution of any activity.
- This drawing is to be read in conjunction with all other drawings, the Contract Specification, Specification for Highways Works and documentation supplied by the Engineer. This shall include Surrey County Council Standard Details and Pre-Construction Information (PCI).
- The Contractor shall retain one copy of all documents and drawings permanently in the site office/welfare unit.
- The Contractor shall ensure that the standard detail drawings are kept on site and are accessible to all personnel on site.
- This drawing details non-invasive works only. The Contractor shall not use this drawing as a basis to carry out activities where excavation is required.
- The Manual of Contract Documents for Highways Works (MCHW) shall be applicable for tasks not expressly covered with items published in the Contractors Schedule of Rates
- The Contractor's working hours shall be considered to be those on the relevant streetworks permits

Site Constraints

- Apart from activities required to be carried out at night, working hours are 07:30 - 17:30, Monday to Friday unless stated otherwise in the traffic permits or otherwise accepted by the Engineer.
- All traffic management to be compliant with Chapter 8, Traffic Signs Manual.
- The Contractor shall keep stockpiles/material storage strictly confined to areas accepted by the Engineer in advance.
- A number of commercial premises exist at the site and the Contractor is expected to endeavor not to disrupt the day-to-day operation of businesses so far as is practicable.
- The Contractor shall keep width free of obstruction and for access by emergency vehicles.

Health & Safety

- No construction shall take place until an acceptable Construction Phase Plan (CPP) has been prepared.
- The Contractor shall provide adequate welfare facilities which are to be located only in areas agreed with the Client.
- No excavation shall be carried out until the locations of buried services have been marked out, including private supply and building drainage where identified. This shall consist of the very best use of radiodetection equipment, such as 'Cat & Genny'.
- The Contractor shall prepare task-specific method statements and risk assessments for any residual site-specific hazards identified in the Pre-Construction information, or annotated on scheme drawings.

Client-appointed Third Parties

- The Contractor shall allow for the accommodation of Client-appointed third parties and statutory undertakers within their programme, sequence of construction and prices.
- The Contractor shall recognise that certain activities cannot take place without prior work being undertaken by third parties, e.g. electrical disconnections and programme the works and adjust the construction sequence accordingly.
- Third parties required for the works are:
 - Skanska - Highway electrical works, e.g. street lighting and illuminated traffic signs/beacons.
 - Thames Water - Relocation of Fire Hydrants.
 - UKPN - Diversion of mains electricity.
 - Svefor/Siemens - Traffic Signal Installation.

KEY:

- CARRIAGEWAY TO BUILDOUT - 125mm THICK COMPRISING 20mm THICK SURFACE COURSE AC6 DENSE SURF 100/150 AND 105mm THICK BINDER COURSE REGULATING COURSE AC20 DENSE BIN 100/150
- CARRIAGEWAY TO CENTRAL FOOTWAY - 70mm THICK COMPRISING 20mm THICK SURFACE COURSE AC6 DENSE SURF 100/150 AND 50mm THICK BINDER COURSE REGULATING COURSE AC20 DENSE BIN 100/150
- CARRIAGEWAY/ISLAND AREAS TO BE REMOVED
- EXISTING KERBS TO BE REMOVED
- NEW KERBS
- EXISTING KERBLINE
- PROPOSED 'BUFF' TACTILE PAVING
- PROPOSED ROAD MARKINGS TO BE LAID IN ACCORDANCE WITH TSRGD
- EXISTING ROAD MARKINGS TO REMAIN
- CUT BACK VEGETATION WITH A HEIGHT CLEARANCE OF 2.50m AND EDGE OUT SIDES OF EXISTING FOOTWAY (TOTAL LENGTH = 00.00m)
- DOUBLE YELLOW LINE RESTRICTIONS
- SINGLE YELLOW LINE RESTRICTIONS
- PROPOSED POST AND SIGN
- EXISTING 2-WAY TRAFFIC TO REMAIN TO ALLOW 'THE MINT' RESIDENTS TO EXIT MILL LANE DUE TO TIGHT SWEEPED PATH.

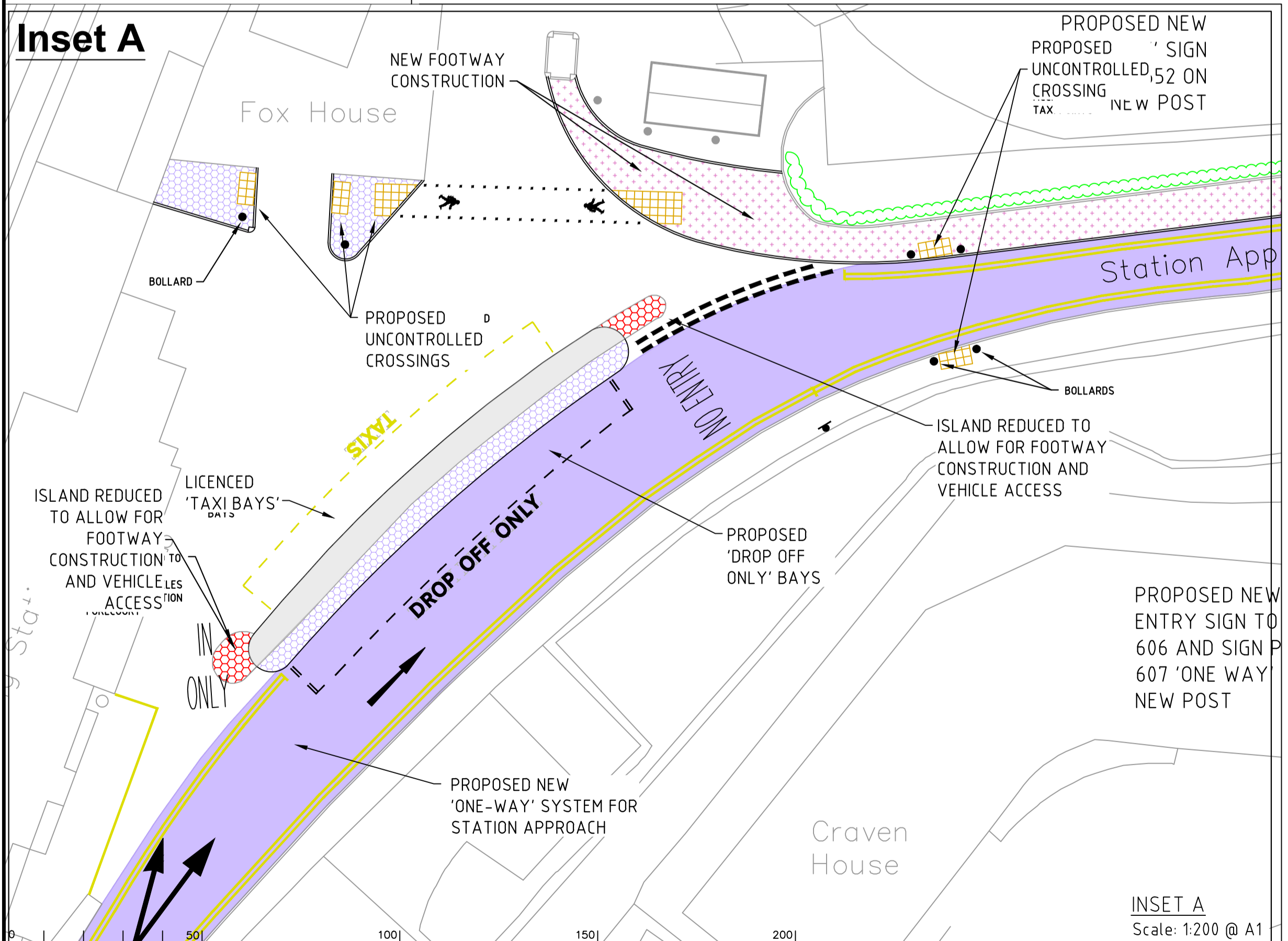
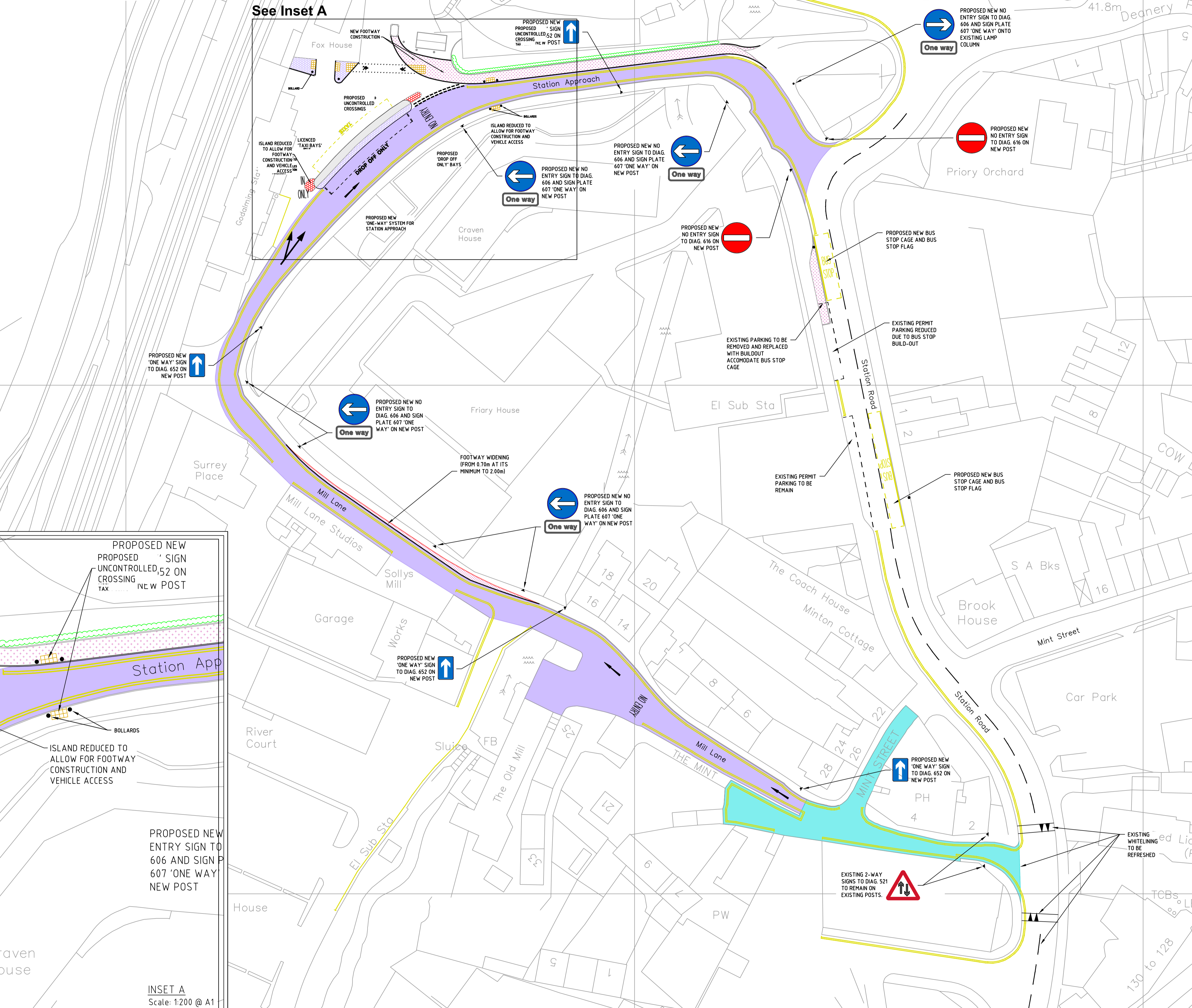
SAFETY, HEALTH AND ENVIRONMENTAL INFORMATION

In addition to the hazards/risks normally associated with the types of work detailed on this drawing, note the following significant residual risks. (Reference shall also be made to the Design Hazard Log)

CONSTRUCTION
MAINTENANCE/CLEANING
USE
DECOMMISSIONING/DEMOLITION

It is assumed that all works will be carried out by a competent contractor working, where appropriate, to an approved method statement.

GENERAL ARRANGEMENT
Scale: N.T.S.



Notes

Rev.	Description	Drwn	Sig.	Date	Chkd	Sig.	Date	Appr	Sig.	Date

North Point	
Based upon the Ordnance Survey mapping with the permission of the Controller of Her Majesty's Stationery Office. Crown copyright. Unauthorised reproduction infringes Crown copyright and may lead to prosecution or civil proceedings. Surrey County Council LA 076872 2002.	
Project	

GODALMING STATION ACCESSIBILITY IMPROVMENTS SCHEME

FEASIBILITY LAYOUT

SURREY COUNTY COUNCIL
Surrey's Best
Transport for Surrey

Project No. PC1176
Contract Sheet No. PC1176-001
Drawing No. -
Classification FEASIBILITY

SHEET 1 OF 1