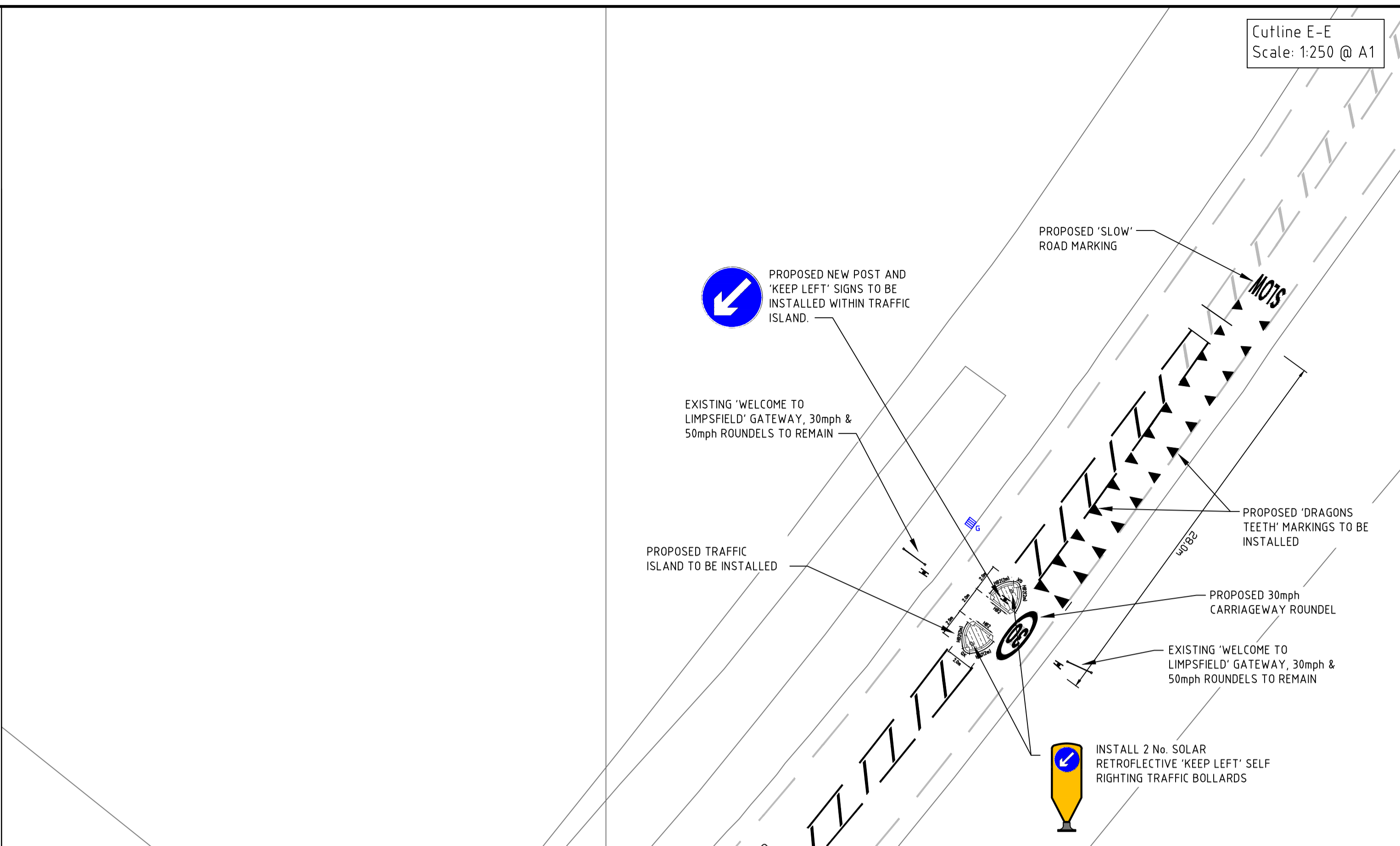
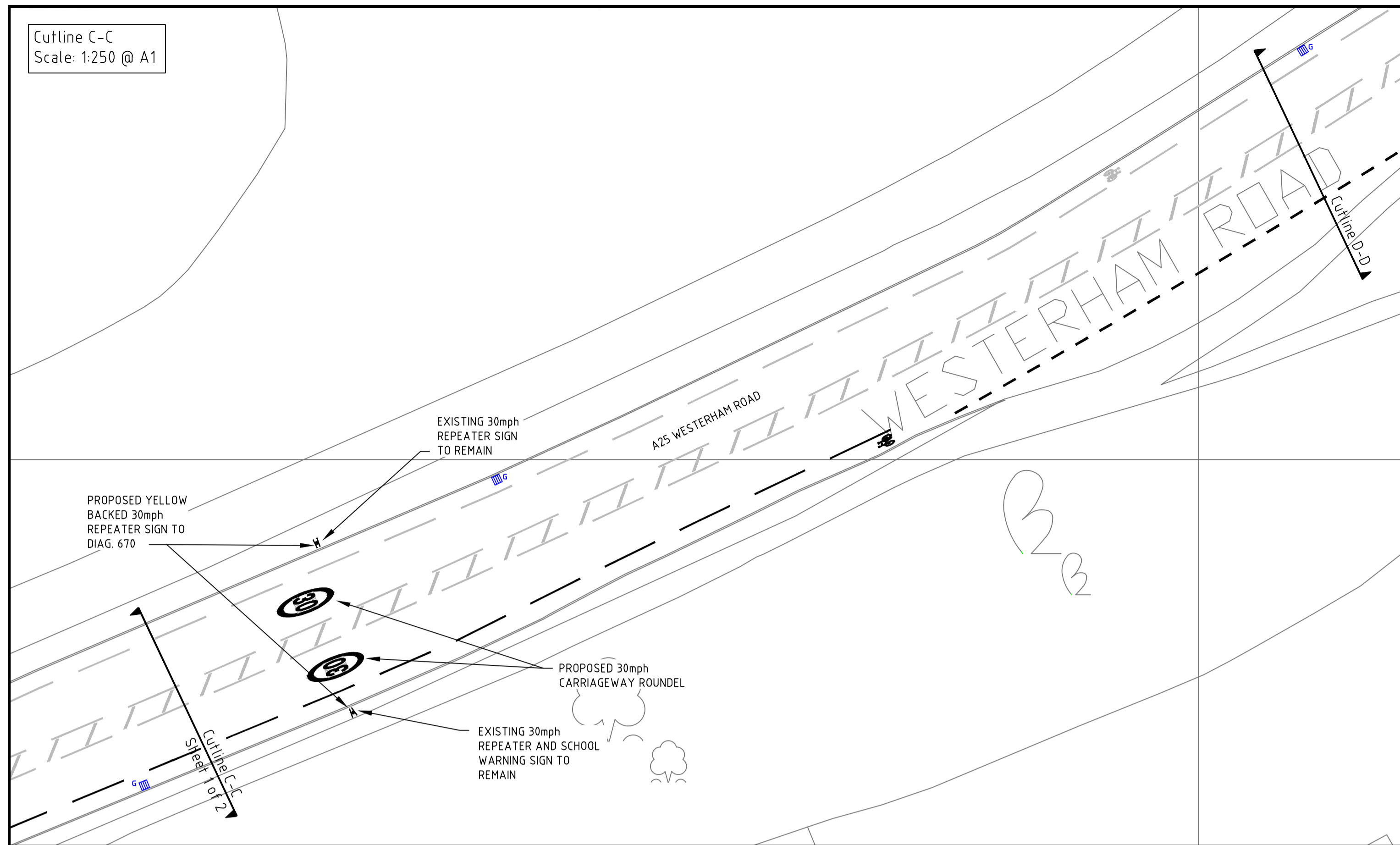


Cutline C-C
Scale: 1:250 @ A1

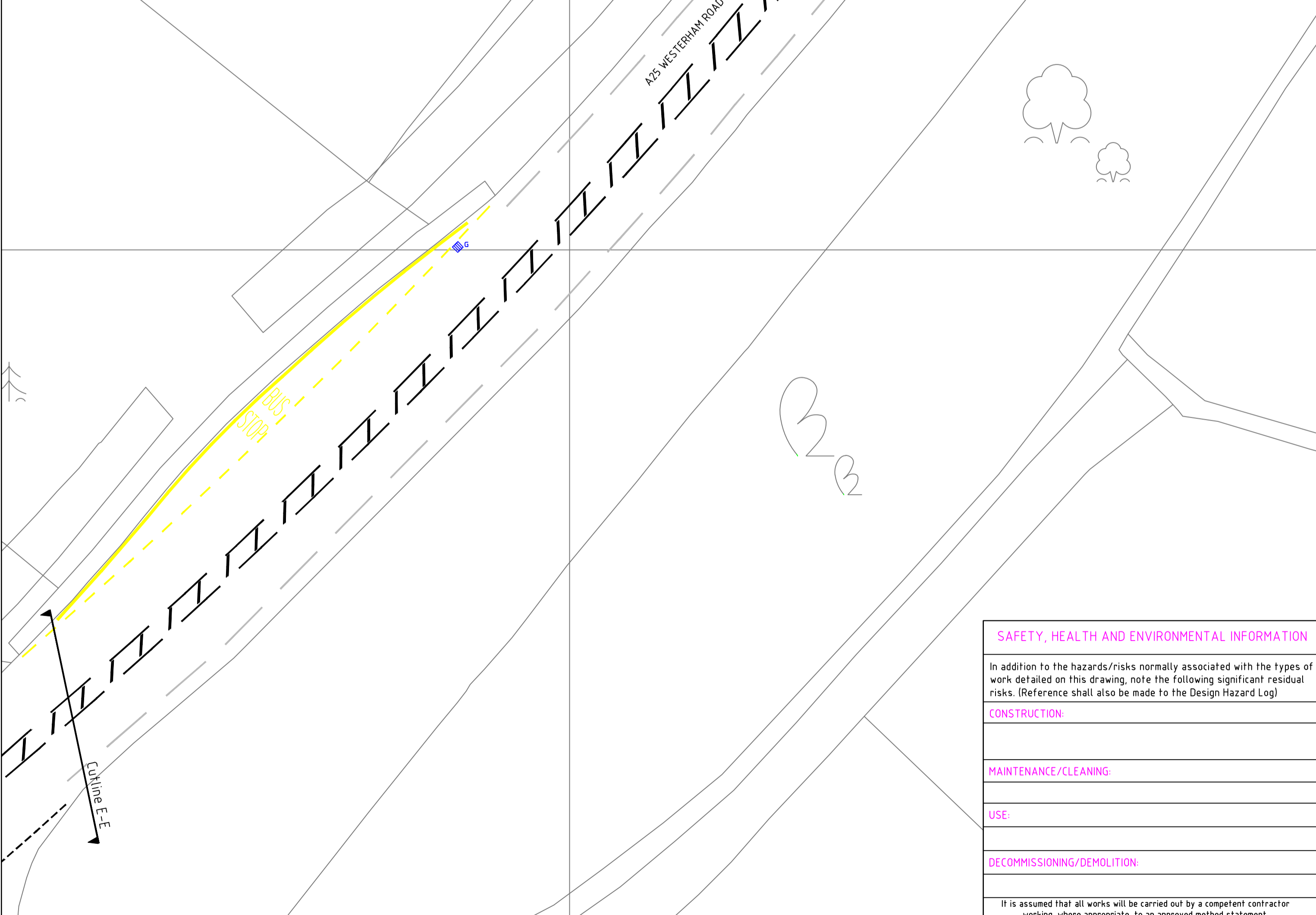
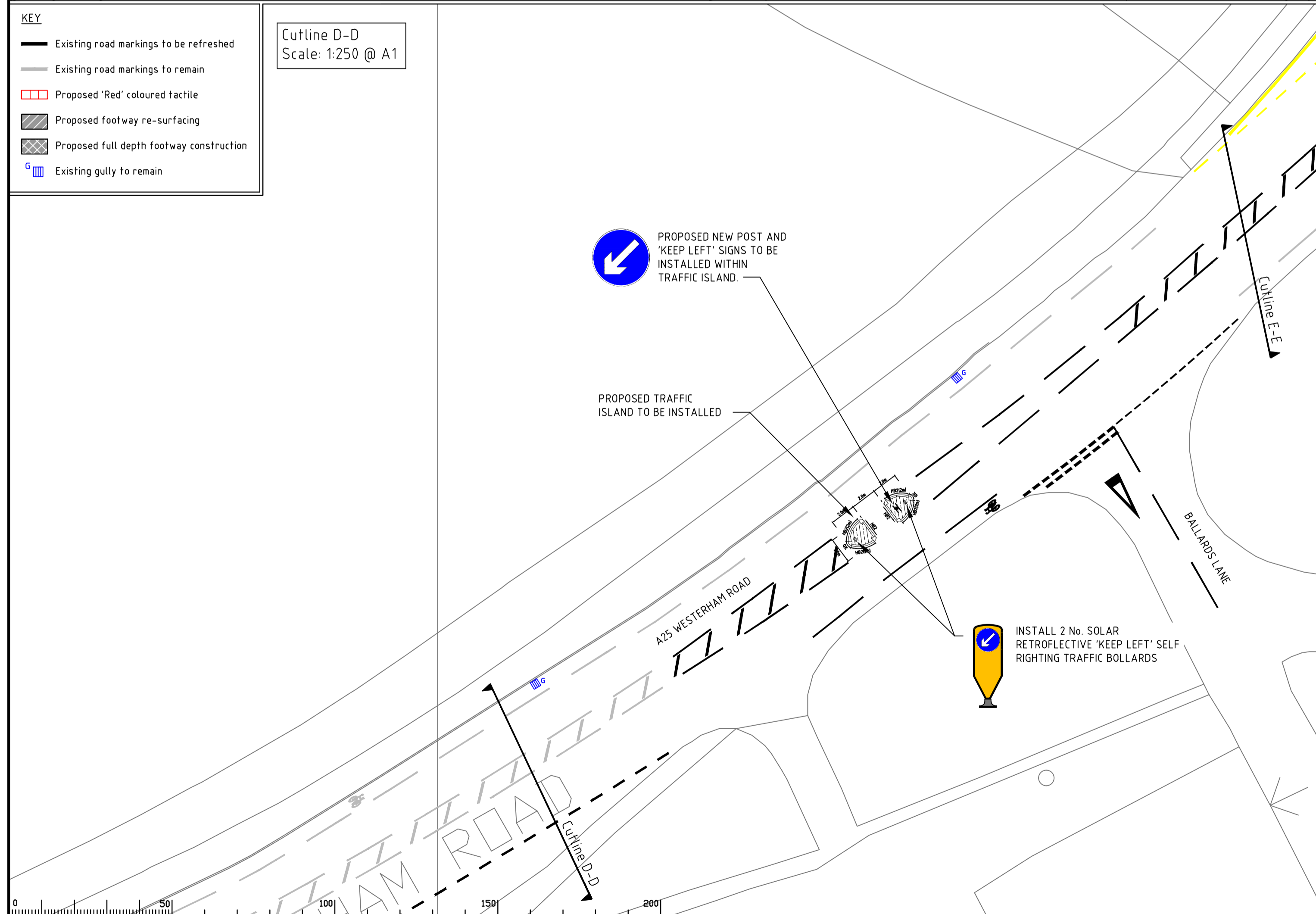
Cutline E-E
Scale: 1:250 @ A1



KEY

- Existing road markings to be refreshed
- Existing road markings to remain
- Proposed 'Red' coloured tactile
- Proposed footway re-surfacing
- Proposed full depth footway construction
- Existing gully to remain

Cutline D-D
Scale: 1:250 @ A1



SAFETY, HEALTH AND ENVIRONMENTAL INFORMATION

In addition to the hazards/risks normally associated with the types of work detailed on this drawing, note the following significant residual risks. (Reference shall also be made to the Design Hazard Log)

| |
|-----------------------------|
| CONSTRUCTION: |
| MAINTENANCE/CLEANING: |
| USE: |
| DECOMMISSIONING/DEMOLITION: |

It is assumed that all works will be carried out by a competent contractor working, where appropriate, to an approved method statement.

Notes

| Rev. | Description | Drwn | Sig. | Date | Chkd | Sig. | Date | Appr | Sig. | Date |
|------|-------------|------|------|------|------|------|------|------|------|------|
| | | | | | | | | | | |
| | | | | | | | | | | |
| | | | | | | | | | | |
| | | | | | | | | | | |
| | | | | | | | | | | |
| | | | | | | | | | | |
| | | | | | | | | | | |
| | | | | | | | | | | |
| | | | | | | | | | | |
| | | | | | | | | | | |

| Rev. | Description | Drwn | Sig. | Date | Chkd | Sig. | Date | Appr | Sig. | Date |
|------|-------------|------|------|------|------|------|------|------|------|------|
| | | | | | | | | | | |
| | | | | | | | | | | |
| | | | | | | | | | | |
| | | | | | | | | | | |
| | | | | | | | | | | |
| | | | | | | | | | | |
| | | | | | | | | | | |
| | | | | | | | | | | |
| | | | | | | | | | | |
| | | | | | | | | | | |

North Point

Based upon the Ordnance Survey mapping with permission of the Controller of Her Majesty's Stationery Office. Crown copyright. Unauthorised reproduction infringes Crown copyright and may lead to prosecution or civil proceedings. Surrey County Council LA 076872 2005.

| | | | | | |
|-------------|----|------|----|------|----------|
| Drawn by | DM | Sig. | DM | Date | 29.12.21 |
| Checked by | JD | Sig. | | Date | |
| Approved by | JD | Sig. | | Date | |

A25 WESTERHAM ROAD, LIMPSFIELD
PROPOSED CENTRAL ISLANDS

CONSULTATION DRAWING
GENERAL ARRANGEMENT

SURREY COUNTY COUNCIL
Surrey's Ambition
Transport for Surrey

Project No. PC1157
Contract Sheet No. 2
Drawing No. CON01
Rev. -
Classification CONSULTATION

Scale As specified

SHEET 2 OF 2