

Welcome

Thank you for taking the time to attend our consultation today to view our emerging proposals for Lingfield Fire Station.

The information on display has been prepared to give you an understanding of our current thinking for the site before we submit a planning application.

If you have any questions there are members of the project team here today who would be happy to help, so please don't hesitate to ask.

We value your feedback, so please do take the time to fill in a feedback form to let us know what you think.

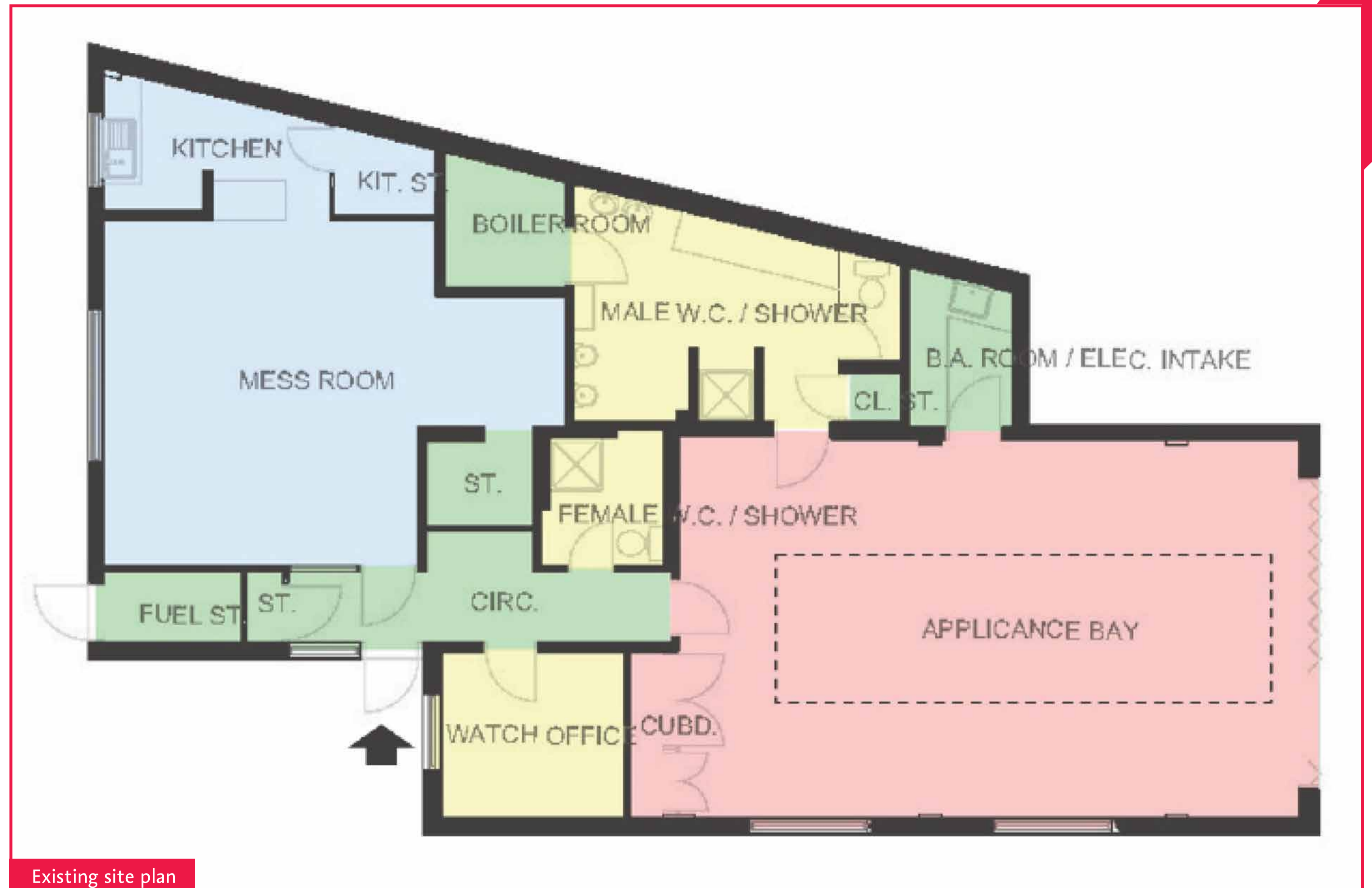


The site

Lingfield Fire Station is accommodated in a building constructed in the 1970s, with a training tower to the rear of the site and an area of hardstanding. The station currently accommodates one fire appliance.

The existing fire station has several structural and operational limitations, including the current appliance bay not being large enough to accommodate the new vehicles being used by Surrey Fire and Rescue Service, minimal space for community engagement and a lack of in-house gym facilities for crew members. The age and construction of the building also makes it more difficult to deliver on the net zero carbon agenda.

The project is part of Surrey Fire and Rescue Service's infrastructure improvements project, a programme of works which will ensure that Surrey Fire and Rescue Service can continue to provide an excellent emergency service to local people.



The proposals

Our proposals for the site include the retention of the existing fire station building with a roof extension to accommodate larger fire appliances being used by Surrey Fire and Rescue Service. A modest single storey rear extension is also planned to accommodate facilities for crews and a community space.

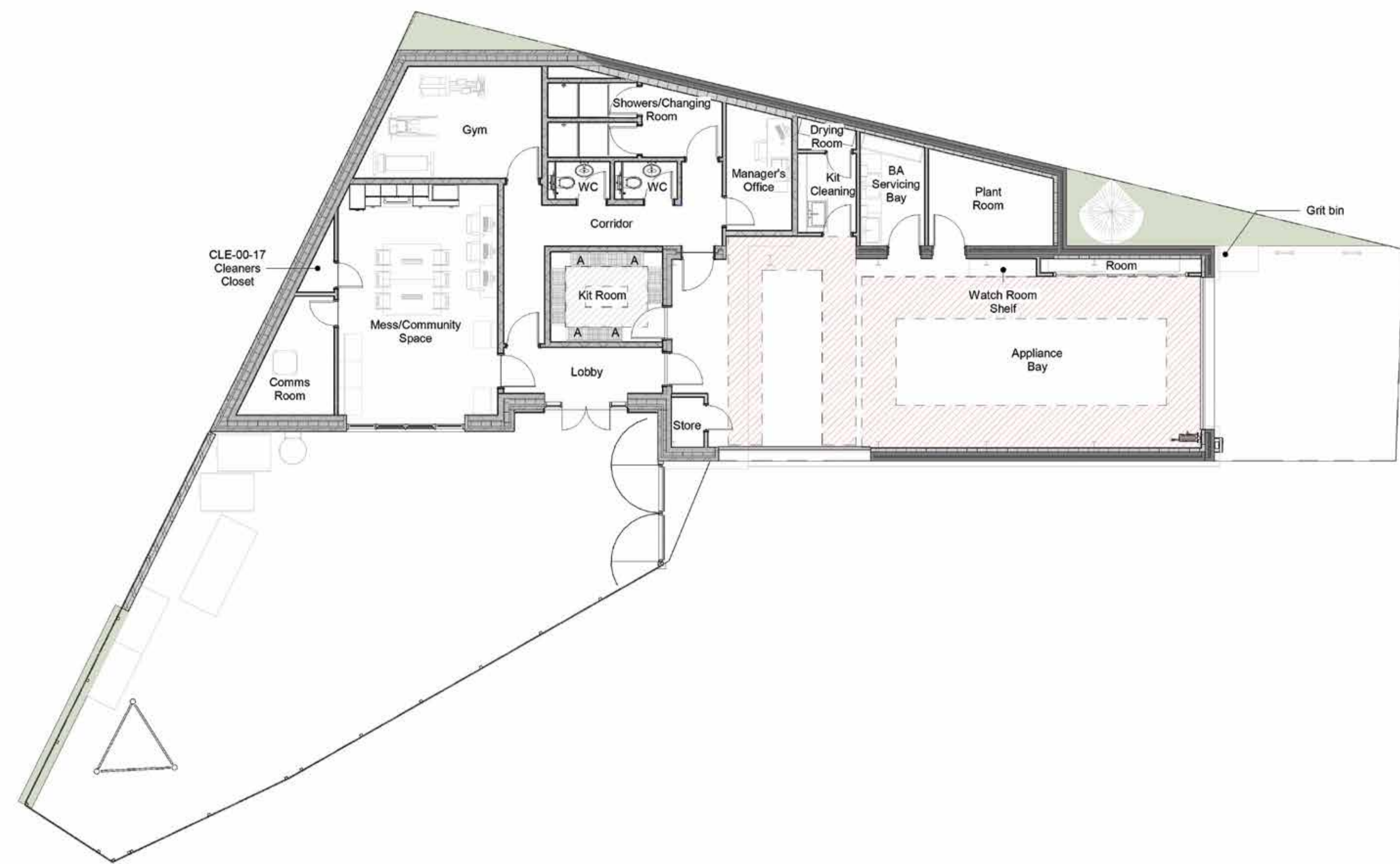
To the right you can see the proposed layout plan which incorporates:

- Appliance bay for one fire appliance and a second fleet vehicle.
- Operational facilities such as Watch Rooms, Station Managers Office, kit / locker rooms and changing facilities.
- Welfare and rest areas including kitchens, breakout spaces and a dedicated gym space.
- Drill yard and Training Tower (Existing).
- Gender neutral showers and changing areas.

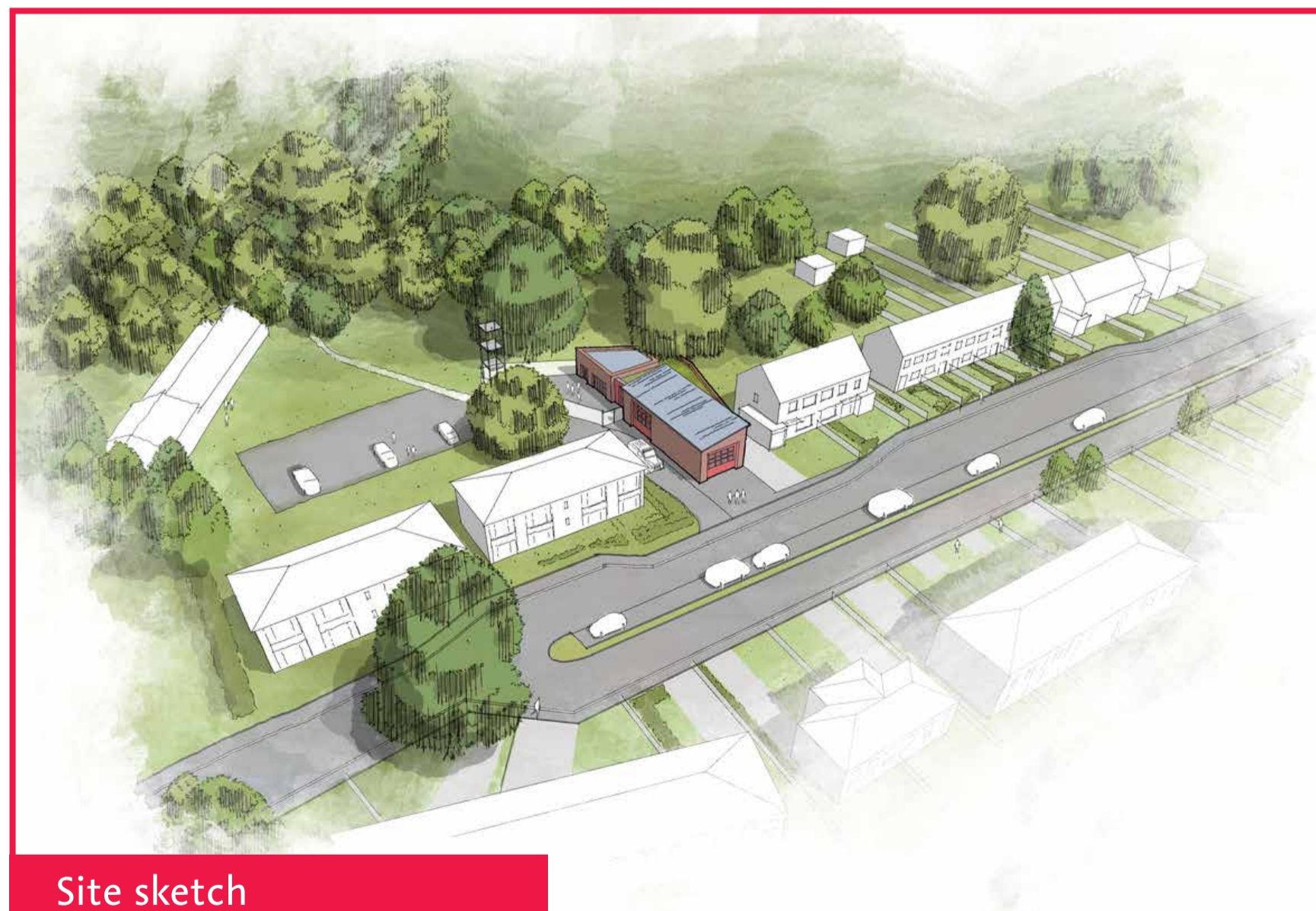
Our proposals will retain the existing arrangement for parking. Staff numbers and vehicle movements will not increase because of the improvements made to the fire station.

We are proposing to suspend some of the on-street parking bays in the layby opposite the fire station to ensure the new larger fire appliances can exit the fire station in a single turn and crews can meet the two-minute departure response time required for 'on-call' fire stations.

Surrey Wildlife Trust are advising on Biodiversity Net Gain, and this has led to the inclusion of a wildflower green roof, bird nests, bat and insect boxes.



Proposed site layout plan



Site sketch



Sustainability

We are committed to delivering a sustainable development and contributing to reaching net zero carbon emissions by 2050.

Below are some of the steps we're taking to make the proposed fire station cleaner, greener and more sustainable:



Taking sustainability into account from the very early design stages to minimise heat loss and maximise air tightness.



Using air source heat pumps to supply heating and hot water.



Installing roof-mounted solar panels to help generate renewable low carbon energy for the site.



Reducing water consumption through careful specification of water fittings.



Designing the building with natural ventilation, and mechanical ventilation and heat recovery to assist with overheating.



The use of smart controls and energy efficient LED lighting to reduce energy use.



Proposed External Appearance



Managing the construction

We are committed to minimising the impact of construction on our neighbours.

When are you expecting to start construction?

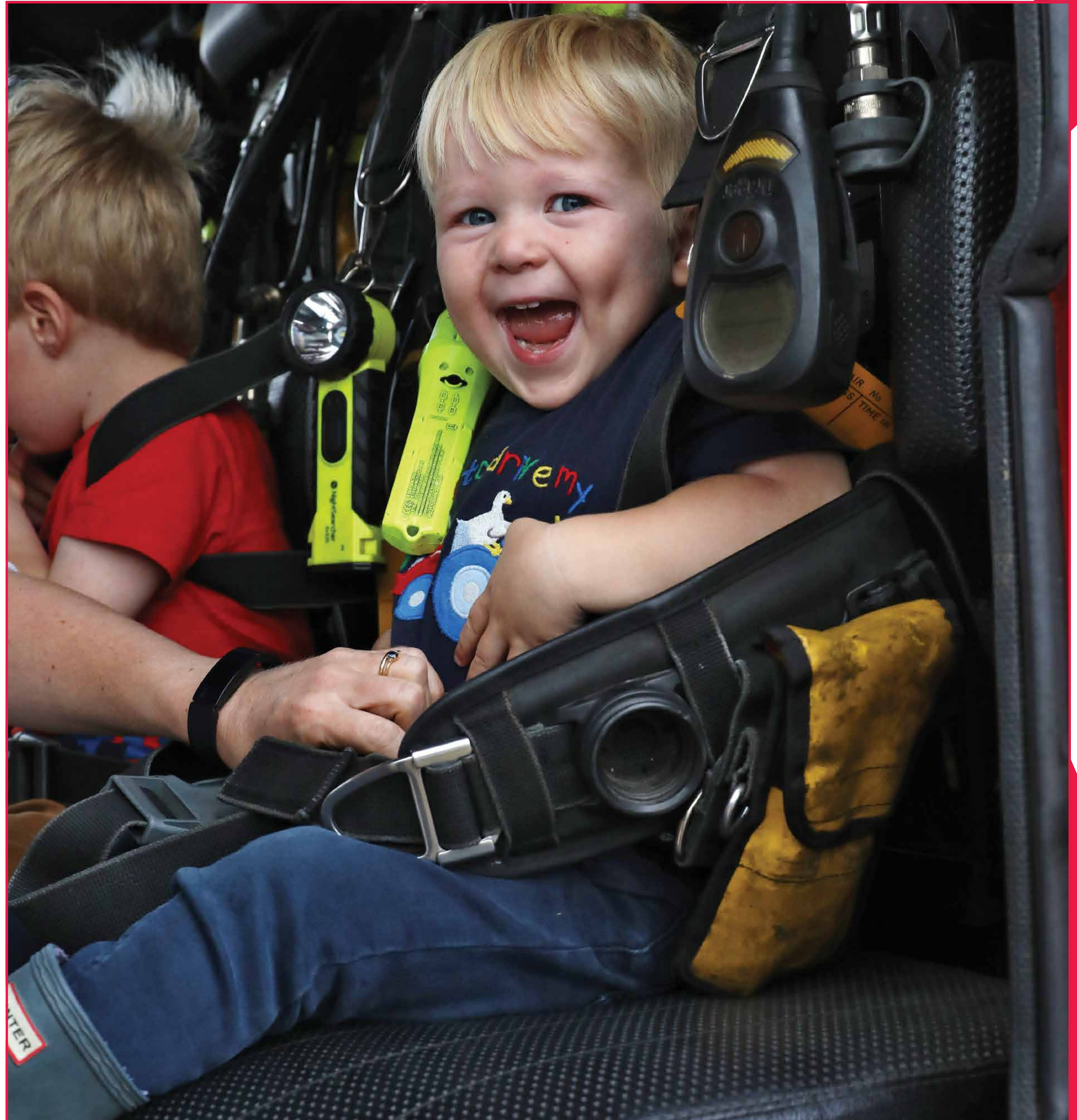
Subject to planning permission, we are hoping to begin construction in November 2023.

How long will construction go on for?

Construction will take approximately 12 months. Although there will inevitably be a period of disruption, our team will give careful consideration to how to minimise the impact. Our primary focus is to ensure that disruption and inconvenience for all local residents is kept to a minimum.

What will the hours of working on the site be?

In accordance with local authority requirements (and any planning approval), all work will be limited to working hours on Monday - Friday, with the additional possibility of Saturday mornings.



Feedback and next steps

Thank you for taking the time to attend our consultation today. We hope you found it useful.

We're now running a period of consultation for two weeks until the 16 February, so that residents and others can have their say on the plans at this stage.

The views of the local community are important to us. We would appreciate it if you could take the time to let us know what you think. Once we've reviewed the feedback, we will finalise our plans and submit a proposal in March 2023.

We have appointed Marengo Communications, a specialist in community consultation, to help share the plans for the site. You can let us know what you think in the following ways:

Complete a feedback form today and leave it with us.

Complete a feedback form online.



Please scan the QR code to find the form online.

Post a form to us at "Freepost CONSULTATION REPLY".



info@marengocomms.com



0800 689 5209

