

Welcome

Thank you for taking the time to attend our consultation event today to view our emerging proposals for Reigate Fire Station.

The information on display has been prepared to give you an understanding of our current thinking for the site before we submit a planning application.

There are members of the project team here today, so if you have any questions, please don't hesitate to ask. They will be happy to help.

It is important to us that you have your say, so please do fill in a feedback form to let us know your thoughts. All feedback received will be considered as we review our plans, to see if they can be improved before we submit the planning application.



The site

Reigate Fire Station sits within the wider Wray Park complex, all of which is occupied by Surrey Fire and Rescue Service. The main entrance is off Croydon Road (A242), the northern boundary of Wray Park is Wray Park Road, and the site has residential areas to each side.

The fire station is ageing and increasingly unfit for purpose. Fire engines (appliances) are larger now than they used to be, and Reigate Fire Station struggles to accommodate this. Modern fire stations should now be built to be gender neutral for personnel, but Reigate was built before this guidance was in place. It is a red brick building, two storeys high at its highest point, with four appliance bays.

The project is part of Surrey Fire and Rescue Service's infrastructure improvements project a programme of works which will ensure the service can continue to provide prevention, protection and response activities.

The delivery of a new fire station is part of a wider investment in Wray Park which will also include future improvements to the Firehouse and Training Facilities to ensure Wray Park can meet the evolving needs of the Fire and Rescue Authority.



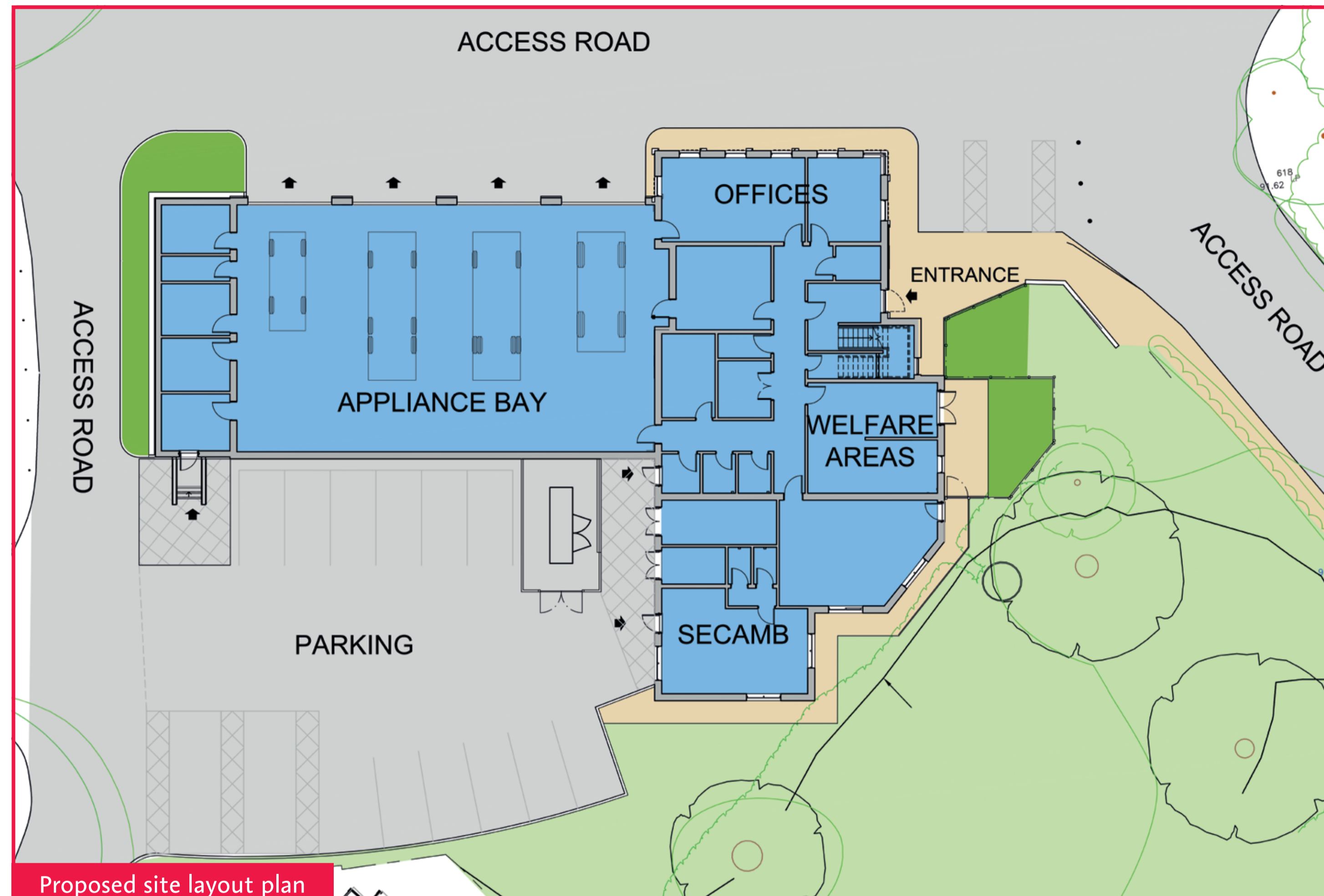
The proposals

Our proposals for the site include the complete demolition and rebuilding of the fire station. The new fire station will have larger appliance bays to accommodate the larger size of the existing fleet of vehicles, better facilities for Fire and Rescue Service personnel, and new facilities for South East Coast Ambulance Service (SECAMB).

To the right, you can see the proposed layout plan, which includes:

- Appliance bays for four fire appliances
- Operational facilities such as Watchrooms; Station Manager's Office, and kit/locker rooms
- New separate space for use by SECAMB
- Welfare and rest areas, including a kitchen; gym; dormitories, and a lounge
- Gender neutral showers and changing facilities.

12 parking spaces will be provided for Fire and Rescue Service personnel, two spaces for SECAMB and two visitor parking spaces.



Sustainability

We are committed to delivering a sustainable development and contributing to reaching net zero carbon emissions by 2050.

Below are some of the steps we're taking to make the proposed fire station cleaner, greener and more sustainable:



Taking sustainability into account from the very early design stages to minimise heat loss and maximise air tightness



Preference will be given to materials and finishes that promote the Council's Net Zero aims and support sustainability



Installing roof-mounted solar panels to help generate renewable, low-carbon energy for the site



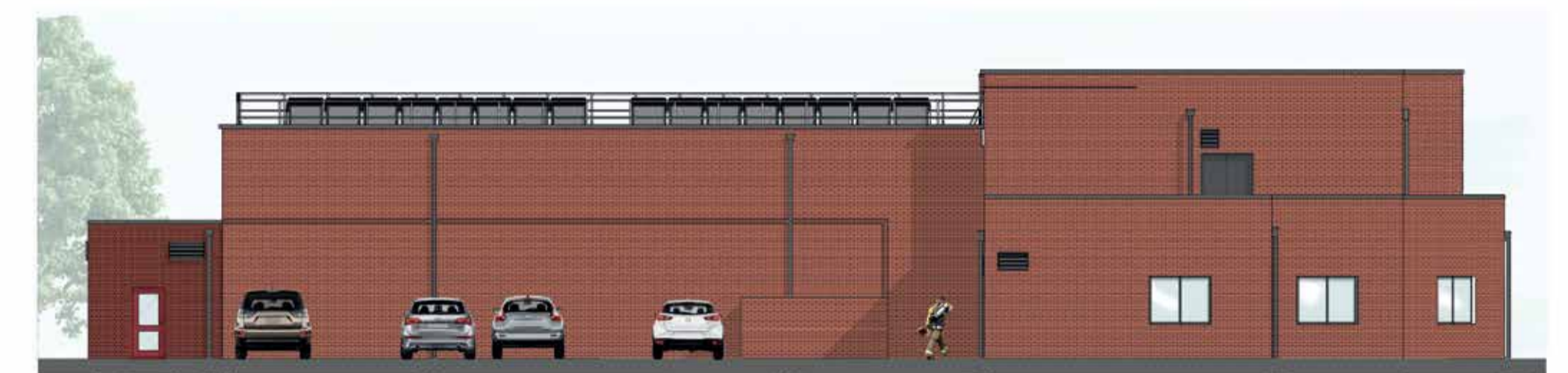
Reducing water consumption through careful specification of water fittings



Using air source heat pumps to supply heating and hot water



Proposed external appearance



Managing construction

We are committed to minimising the impact of construction on our neighbours.

When are you expecting to start construction?

Subject to planning permission, we are hoping to begin construction in April 2024.

How long will construction go on for?

Construction will take approximately 12 months. Although there will inevitably be a period of disruption, our team will give careful consideration to minimising the impact, where possible. Our primary focus is to ensure that disruption and inconvenience for all local residents is kept to a minimum.

What will the hours of working on the site be?

In accordance with local authority requirements (and any planning approval), all work will be limited to working hours on Monday - Friday, with the additional possibility of Saturday mornings.

How will you access the site?

We would like to introduce a temporary access point via Holmesdale Road so that the construction of the new fire station does not disrupt the day-to-day running of the fire service.



Feedback and next steps

Thank you for taking the time to attend our consultation today. We hope you found it useful.

We're now running a period of consultation for two weeks until 5th July, so that residents and others can have their say on the plans at this stage.

The views of the local community are important to us. We would appreciate it if you could take the time to let us know what you think. Once we've reviewed the feedback, we will finalise our plans and submit a proposal in July 2023.

We have appointed Marengo Communications, a specialist in community consultation, to help share the plans for the site. You can let us know what you think in the following ways:

Complete a feedback form today and leave it with us.

Complete a feedback form online.



Please scan the QR code to find the form online.

Post a form to us at "Freepost CONSULTATION REPLY".



info@marengocomms.com



0800 689 5209



Site sketch

